

Welcome Everyone to Mrs. StewART's Class!

We will get started soon.

Today is Navy Day

1st Period- 7:06 - 8:36

3rd Period 8:43 - 10:13

5th Period part 10:20 - 11:23

C Lunch 11:23 - 11:48

5th Period part 2 11:55 - 12:23

7th Period 12:30 - 2:00



# ***New Cell Phone and Backpack Policy***



1. When you come into the classroom place your cell phone in your backpack.
2. Place your backpack in the back storage room where it says your table number. **DO THIS BEFORE THE TARDY BELL!!!!**
3. You will be allowed to get your phone during *Independent Time* which is when you'll upload your bellwork.

\*If your phone is out before the appropriate time then you will need to place it in my file cabinet and you'll be able to retrieve it at the end of class.

## **Why:**

**My goal as your instructor is to make sure I'm giving you the best instruction and that you are receiving that instruction in the most effective way.**

## What You Will Do: (5 MINS)

Conversation	Level-0					
Help	Raise Your Hand					
Activities	Bellwork	1	2	3	4	5
<div><div><div><b>Directions:</b> You're going to use this old Bellwork to complete the bellwork for today.  Using your next available page create a grid that is 1 inch by 1 inch with 5 columns and 5 rows. Label the top and the side.</div></div><div><div>A</div><div>B</div><div>C</div><div>D</div><div>E</div></div></div>						
Movement	Materials Counter					
Participation	Drawing-No Phone					
Sound	Instructor's Music					

## What You Will Do: (5 MINS)

Conversation	Level-0
Help	Raise Your Hand
Activities	Bellwork

### Directions:

Using the grid you set up, fill in row B with the contour lines you see here. 5 MINS

1

2

3

4

5

B



Movement	Materials Counter
Participation	Drawing-No Phone
Sound	Instructor's Music

## What You Will Do: (5 MINS)

Conversation	Level-0
Help	Raise Your Hand
Activities	Bellwork

### Directions:

Using the grid you set up, fill in row B with the contour lines you see here. 5 MINS

1

2

3

4

5

B



Movement	Materials Counter
Participation	Drawing-No Phone
Sound	Instructor's Music

## What You Will Do: (5 MINS)

Conversation	Level-0
Help	Raise Your Hand
Activities	Bellwork

### Directions:

Using the grid you set up, fill in row B with the contour lines you see here. 5 MINS

1

2

3

4

5

B



Movement	Materials Counter
Participation	Drawing-No Phone
Sound	Instructor's Music

## ***Announcements:***

- **Make-Up Work is due Monday, May 24th (Navy Day)**
  - **Remember you need to type the date and name of the assignment in the title area, when you upload to Artsonia**
- **The Realism and Fantasy Portrait Project is due Friday, May 28th (Navy Day)**

**\*Find your work on [katundra.com](http://katundra.com)**

# W.A.P. S. Week 9 q4

**Essential Question:** EQ: What is an effective way to shade in your contour drawing?

## **What will I learn:**

Learn how to use the grid technique to create an accurate portrait of yourself or a friend.

## **How I will learn it? (Agenda)**

Shade in at least 90% of your contour drawing with the Vine Charcoal or Graphite

## **How do I know I learned it?**

If you have the following:

### **Rubric for today:**

- 4 Above Expectation-Complete More than 3
- 3 Met Expectation- Shade in at least 90% of the contour drawing with charcoal or graphite
- 2 Approaching Expectation-Complete less than 3
- 1 Below Expectation-No evidence
- Due May 27 for Silver Day- 2 Days left

### Vocabulary:

- **Proportion** - a principle of art that deals with the relationship of size and shapes of subjects within a drawing or painting.
- **Grid technique** - a drawing technique in which a proportional grid is used to aid in the drawing process. Typically, a grid is placed or drawn over a photo or drawing. A proportional grid is drawn on the support. Comparisons are made using the squares placed on the reference grid in order to aid in creating an accurate transfer.
- **Self portrait** - A portrait drawing or painting created by the artist of the artist



## **We've Now Entered Independent Time**

- You Have 5 Mins To Upload Your Work To Artsonia
- You Have The Remainder Of The Period To Complete The  
Items On The Agenda

# You Have 5 mins to Upload Your Work to Artsonia

1. Either Download the Artsonia App on your phone or Use your Desktop Browser and type in Artsonia.com
2. Click on Student
3. Type in the Access Code **ZWSY-FKRS**
4. Click on All Students
5. Enter Your Name
6. Add Art
7. Select the name of the assignment:  
**Wk 9 5 24 q4 BW**
8. Take a Picture
9. Crop the image if needed
10. Title the work
11. Type the Artist Statement:
12. Submit to Teacher

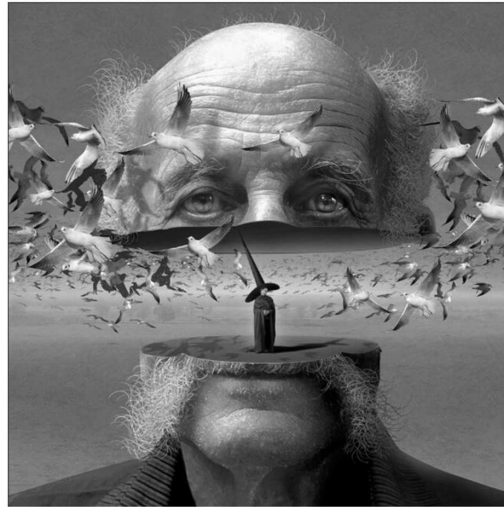
# Realism and Fantasy Grid Portrait-Session 5

## Directions:

Photograph yourself or a friend and print the photo out on paper. The photo can be in black and white. Create a grid over the photo and use the grid to draw the contours of your subject on a larger sheet of paper.

## Today's Goal:

1. Shade in at least 90% of your contour drawing with the Vine Charcoal or Graphite
2. Upload the progress of your drawing to Artsonia.



## Today's Rubric:

- 4 Above Expectation-Complete More than 3
- 3 Met Expectation- Shade in at least 90% of the contour drawing with charcoal or graphite
- 2 Approaching Expectation-Complete less than 3
- 1 Below Expectation-No evidence

# Realism and Fantasy Grid Portrait

## Directions:

Photograph yourself or a friend and print the photo out on paper. The photo can be in black and white. Create a grid over the photo and use the grid to draw the contours of your subject on a larger sheet of paper.

## Composition Options:

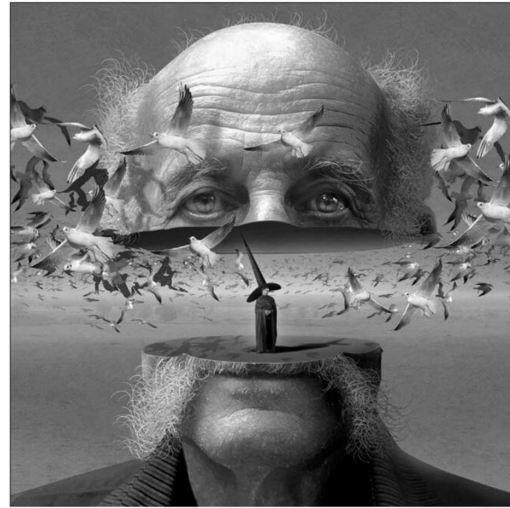
1. You can draw 100% realism from your photo reference

or

2. (Advance) You can draw half of the face as a different scene and the other half as the actual facial features. Each day you'll upload the progress of your drawing to Artsonia.

## MATERIALS:

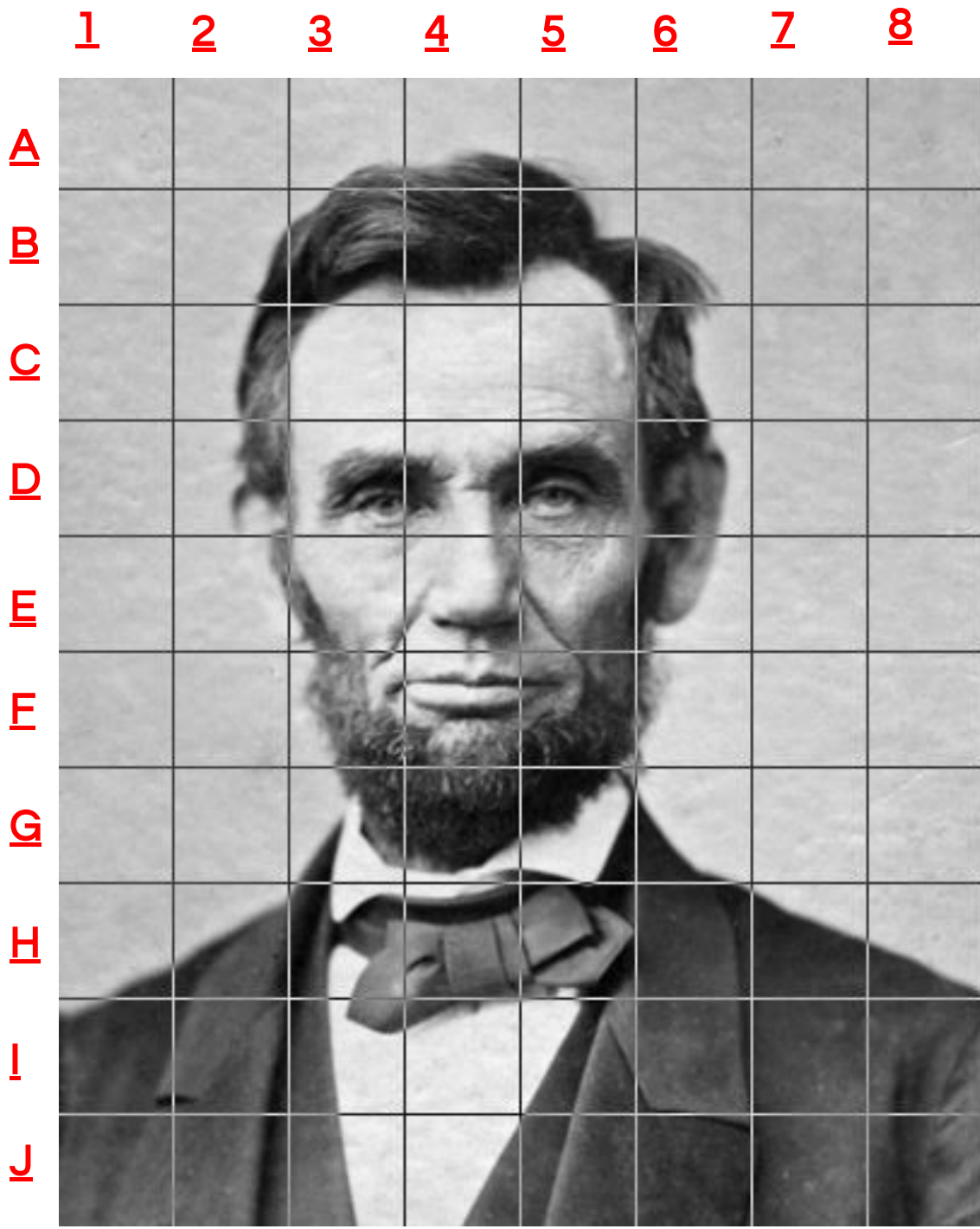
- 18" by 24" heavy paper
- Pencils
- Yardsticks and rulers
- Erasers
- Camera



## Project Requirements: 200 pts

- ☐ Fill the space and show **good** drawn evidence of the Portrait. **(30 pts)**
- ☐ **Fill** the space and show **good** evidence of Shading and Blending **(30 pts)**
- ☐ Effective Composition **(30 pts)**
- ☐ Follows directions of assignment creatively. Also, follows Art Room Rules. **(80 pts)**
- ☐ Appears thoughtfully planned; very neatly done; shows unity; "Hanging Quality Work." **(30 pts)**

# Photo Reference If You Don't Have One



# Setting Up Your Grid for Reference and the 18 x24 Drawing Paper

## Directions:

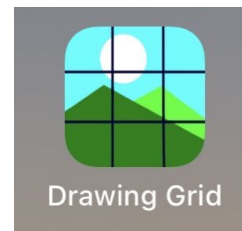
On the 18 inch side of your paper, make a dot at the top of your page at 1 inch, 3, 5, 7, 9, 11, 13, 15, and 17 inch then do the same at the bottom. Connect your dots with a yardstick or straight edge.

On the 24 inch side of your paper, make a dot at the top of your page at every 2 inches and then do the same at the bottom. Connect your dots with a yardstick or straight edge.

Label the columns and the rows. Use my example to follow.

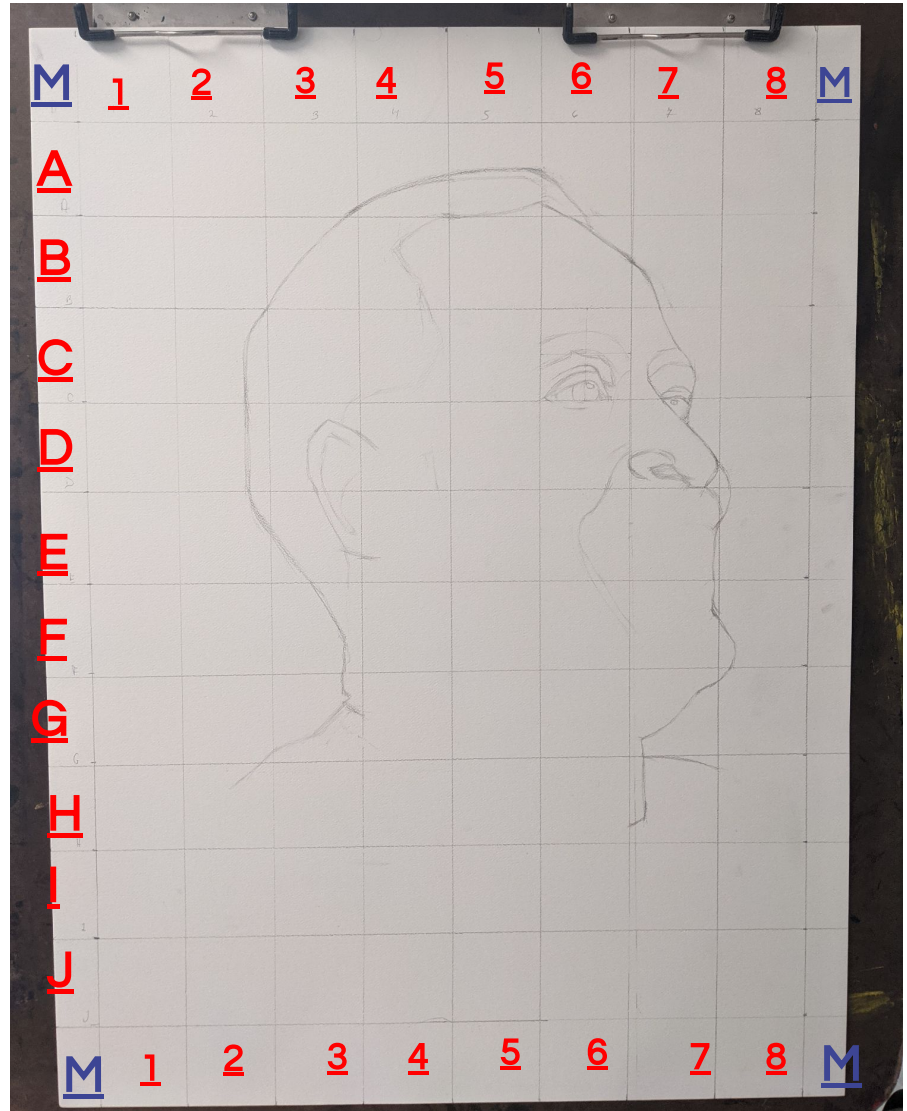
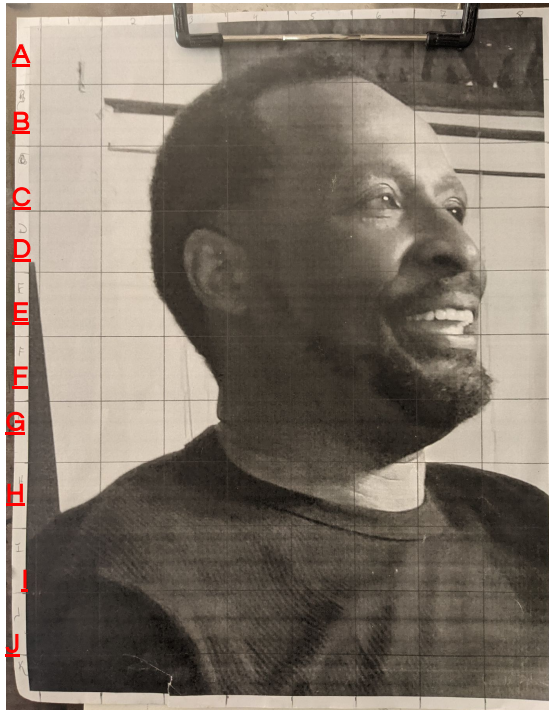
## Photo Reference Directions:

- Download the Drawing Grid App
- 10 Rows and 8 Columns
- Squares





## Example for labels



Drawing Grid

### Photo Reference Directions:

- Download the Drawing Grid App
- 10 Rows and 8 Columns
- Squares

# You Have 5 mins to Upload Your Work to Artsonia

1. Either Download the Artsonia App on your phone or Use your Desktop Browser and type in Artsonia.com
2. Click on Student
3. Type in the Access Code **ZWSY-FKRS**
4. Click on All Students
5. Enter Your Name
6. Add Art
7. Select the name of the assignment:  
**Wk9\_5\_24\_Session 5 Portrait**
8. Take a Picture
9. Crop the image if needed
10. Title the work
11. Type the Artist Statement:
12. Submit to Teacher