

Welcome Everyone to Mrs. StewART's Class!

We will get started soon.

Today is Navy Day

1st Period- 7:06 - 8:36

3rd Period 8:43 - 10:13

5th Period part 10:20 - 11:23

C Lunch 11:23 - 11:48

5th Period part 2 11:55 - 12:23

7th Period 12:30 - 2:00



New Cell Phone and Backpack Policy



1. When you come into the classroom place your cell phone in your backpack.
2. Place your backpack in the back storage room where it says your table number. **DO THIS BEFORE THE TARDY BELL!!!!**
3. You will be allowed to get your phone during *Independent Time* which is when you'll upload your bellwork.

*If your phone is out before the appropriate time then you will need to place it in my file cabinet and you'll be able to retrieve it at the end of class.

Why:

My goal as your instructor is to make sure I'm giving you the best instruction and that you are receiving that instruction in the most effective way.

What You Will Do: (5 MINS)

Conversation	Level-0
Help	Raise Your Hand
Activities	Bellwork

Directions:

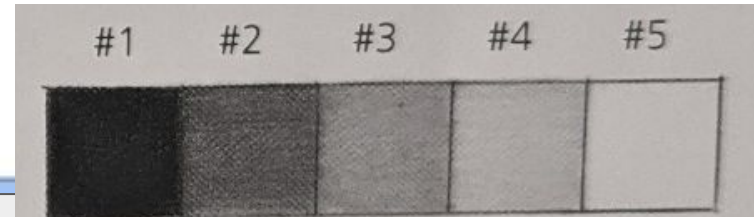
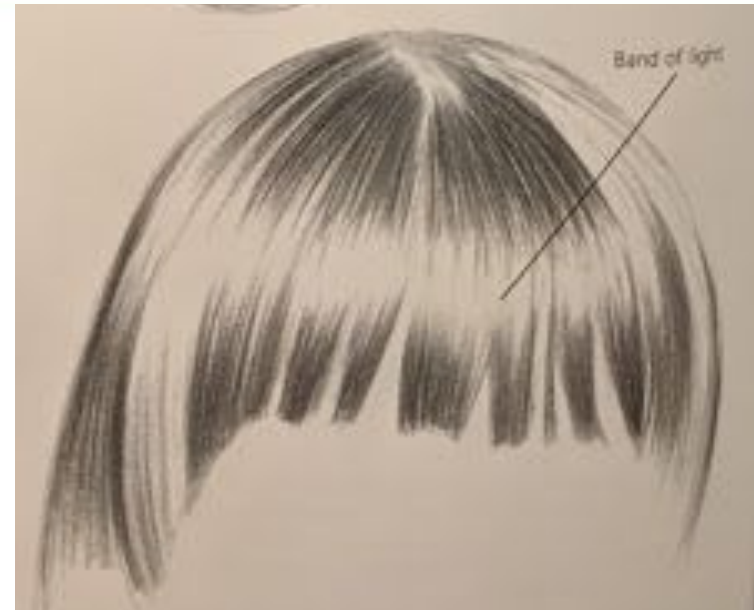
Use the next square to **DRAW** and **SHADE** this eye. (Remember to use the 5 tone value scale)

You have 10 minutes

Direcciones:

Usa el siguiente cuadrado para DIBUJAR y SOMBRAR esta nariz y boca. (Recuerde usar la escala de valor de 5 tonos)

Tienes 10 minutos



Movement	Materials Counter
Participation	Drawing-No Phone
Sound	Instructor's Music

W.A.P. S. Week 5 q4

How do I know I learned it?

If you have the following:

Rubric for the Eye Exercise:

- Labels and text = 20pts
- Visuals = 20pts
- Shaded 20pts

Essential Question: **EQ:** What is the best way to draw hair?

What will I learn:

The student will learn the concept of value in terms of art. The student will learn the importance of value in the development of drawings and paintings

How I will learn it? (Agenda)

- Discuss drawing hair
- Read about the hair
- Complete the Hair Exercise
- Submit the image you want to draw and tell me the composition option you're going to choose

Vocabulary:

Value - In terms of art, value is the darkness or lightness of a color.

Tints - Tints are lighter values of a color.

Shades - Shades are darker values of a color.

Light Source - Location from which light is emitted.

Chiaroscuro - A drawing and painting effect of applying contrasting values in order to create the illusion of light source.

Hair Exercise



Draw the hair as one large shape. Add some shading under the bangs. Hair creates shadows on the skin, so this will help keep the bright white of the paper from shining through.



Do this first.

Apply quick pencil marks going in the direction of the arrows. See how it goes *down* from the top where the part is, and *up* from the bottom of the bangs? Keep applying the pencil lines until it starts to fill in. You can kind of see the "band of light" starting to form where the pencil lines don't quite meet. Keep your lines smooth; don't ever scribble.



Blend everything out. Blend in the same direction that you applied the pencil strokes. Don't ever blend across!



Darken the areas one more time. Use the same procedure as you did when you first applied your pencil lines.

Realism and Fantasy Grid Portrait

Directions:

Photograph yourself or a friend and print the photo out on paper. The photo can be in black and white. Create a grid over the photo and use the grid to draw the contours of your subject on a larger sheet of paper.

Composition Options:

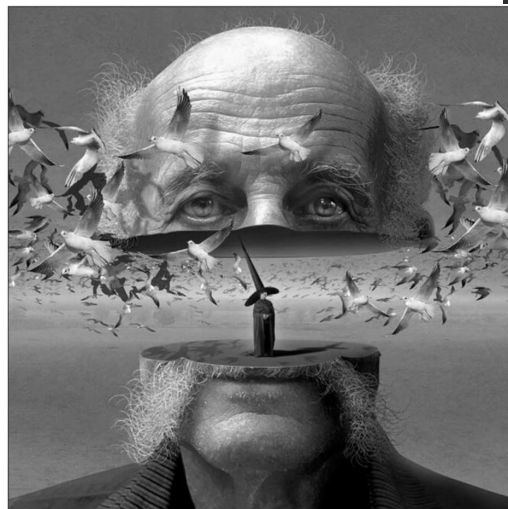
1. You can draw 100% realism from your photo reference

or

2. (Advance) You can draw half of the face as a different scene and the other half as the actual facial features. Each day you'll upload the progress of your drawing to Artsonia.

MATERIALS:

- 18" by 24" heavy paper
- Pencils
- Yardsticks and rulers
- Erasers
- Camera



Project Requirements:

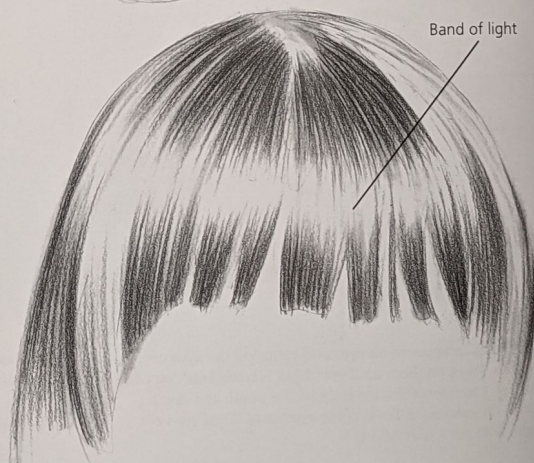
- ☐ Fill the space and show **good** drawn evidence of the Portrait.
- ☐ **Fill** the space and show **good** evidence of Shading and Blending
- ☐ Effective Composition
- ☐ Follows directions of assignment creatively. Also, follows Art Room Rules.
- ☐ Appears thoughtfully planned; very neatly done; shows unity; "Hanging Quality Work."

ADDING HAIR



Look at this example. Remember when we compared the roundness of the head and face with the roundness of the sphere? That roundness is also seen beneath the hair and shows up in the hair as light areas. Wherever the head is the roundest and the hair is sticking out the farthest, you will see light.

See the light area across the forehead? This is called the "band of light." The forehead looks round because of it.



Shade the face and the cheeks. Refer to page 23 if you need help with the shadow placement. Remember the ball exercise. Add the dark areas next to the face, under the ears and on the neck.

The final detail will be the hair. Let's take some time to understand it. Like all of the other features, it has a formula to follow, in order to make it look real.

DRAWING HAIR STEP BY STEP

People think that because hair is the last thing to draw, it is a quick finish. Well, it is the final touch, but it is far from being quick! Drawing hair so it looks real re-

quires time and patience, but it is well worth the effort.

Follow along as I show you how to do the hair. I have left out the face, but you continue ahead

on your drawing. You should at this time have the face fully drawn and blended.



Do this first.

Apply quick pencil marks going in the direction of the arrows. See how it goes *down* from the top where the part is, and *up* from the bottom of the bangs? Keep applying the pencil lines until it starts to fill in. You can kind of see the "band of light" starting to form where the pencil lines don't quite meet. Keep your lines smooth; don't ever scribble.

Draw the hair as one large shape. Add some shading under the bangs. Hair creates shadows on the skin, so this will help keep the bright white of the paper from shining through.



Blend everything out. Blend in the same direction that you applied the pencil strokes. Don't ever blend across!

Darken the areas one more time. Use the same procedure as you did when you first applied your pencil lines.

We've Now Entered Independent Time

- You Have 5 Mins To Upload Your Work To Artsonia
- You Have The Remainder Of The Period To Complete The
Items On The Agenda

You Have 5 mins to Upload Your Work to Artsonia

1. Either Download the Artsonia App on your phone or Use your Desktop Browser and type in Artsonia.com
2. Click on Student
3. Type in the Access Code **ZWSY-FKRS**
4. Click on All Students
5. Enter Your Name
6. Add Art
7. Select the name of the assignment:
Wk 5 4 26 q4 BW
8. Take a Picture
9. Crop the image if needed
10. Title the work
11. Type the Artist Statement:
12. Submit to Teacher

Submit Your Photo Reference

Directions:

- Submit the Photo Reference you want to use for the project to Artsonia under [Wk5_4_26_q4_PhotoReference for project](#).
- The image should be a bust which is from the shoulders up
- Answer the Artist Statement questions



grade: 12
uploaded: February 10, 2021
art status: completed
art title: —
statement: —
feedback: —
visibility: public



grade: 12
uploaded: February 10, 2021
art status: completed
art title: —
statement: —
feedback: —
visibility: private (waiting for parent)



grade: 11
uploaded: February 10, 2021
art status: completed
art title: —
statement: —
feedback: —
visibility: private (waiting for parent)



grade: 11
uploaded: February 8, 2021
art status: completed
art title: —
statement: —
feedback: —
visibility: public

Wk5 4 26 Hair Exercise

Direction:

Go to katundra.com follow the directions from the text we just read.

When you're done your paper should look like this.

Rubric:

- Labels and text = 20pts
- Visuals = 20pts
- Shaded = 20pts

Hair Exercise



Draw the hair as one large shape. Add some shading under the bangs. Hair creates shadows on the skin, so this will help keep the bright white of the paper from shining through.



Do this first.

Apply quick pencil marks going in the direction of the arrows. See how it goes *down* from the top where the part is, and *up* from the bottom of the bangs? Keep applying the pencil lines until it starts to fill in. You can kind of see the "band of light" starting to form where the pencil lines don't quite meet. Keep your lines smooth; don't ever scribble.



Blend everything out. Blend in the same direction that you applied the pencil strokes. Don't ever blend across!



Darken the areas one more time. Use the same procedure as you did when you first applied your pencil lines.

You Have 5 mins to Upload Your Work to Artsonia

1. Either Download the Artsonia App on your phone or Use your Desktop Browser and type in Artsonia.com
2. Click on Student
3. Type in the Access Code **ZWSY-FKRS**
4. Click on All Students
5. Enter Your Name
6. Add Art
7. Select the name of the assignment:
[Wk5_4_26_q4_Photo](#)graph for project
[Wk5 4 26 Hair Exercise](#)
8. Take a Picture
9. Crop the image if needed
10. Title the work
11. Type the Artist Statement:
12. Submit to Teacher