

Monday Amazing Art - Week 2

10/17



In your sketchbook Let's
Describe this work of art!
Describe the COLORS, LINES,
SHAPES, AND SPACES you see.

Start by writing the elements
and draw the example next to
each one.

Line:

Shape:

Color:

Space:

Texture:

Title: Self-Portrait

Artist: Pierre-Auguste Renoir

Monday 10-17-16

Learning Goal #7: Students can use a sketchbook, folder, or portfolio to develop ideas and solve visual-thinking challenges and develop problem-solving skills.

Daily Question: Do I have what I need in my folder and sketchbook?

AGENDA: How I will learn it?

- Add paper to folder
- Outline and add a color scheme to the Symbolic Mandala

WEEK 2

How do I know I learned it?

When I can score at least a 3 on the scale

4	I can correctly complete this activity innovatively.
3	I can correctly complete this activity independently
2	I can correctly complete this activity using peers assistance
1	I can correctly complete this activity using teacher assistance

5. How can I use it?

You can use the organization in other classes.

Tuesday Amazing Art - Week 2

10/18/16

Let's Analyze this work of art!

How did the artist organize this work of art?

Pick 3 of Principles of Design and EXPLAIN!



Tuesday 10-18-16

Learning Goal #5 & 6: Students can create original drawings from observations, visual reference, and imagination. They can also demonstrate an understanding of color theory.

Daily Question: Can I demonstrate color theory in my design?

AGENDA: How I will learn it?

- **Outline and add a color scheme to the Symbolic Mandala**

WEEK 2

How do I know I learned it?

When I can score at least a 3 on the scale

4	I can correctly complete this activity innovatively.
3	I can correctly complete this activity independently
2	I can correctly complete this activity using peers assistance
1	I can correctly complete this activity using teacher assistance

5. How can I use it?

You can use the organization in other classes.

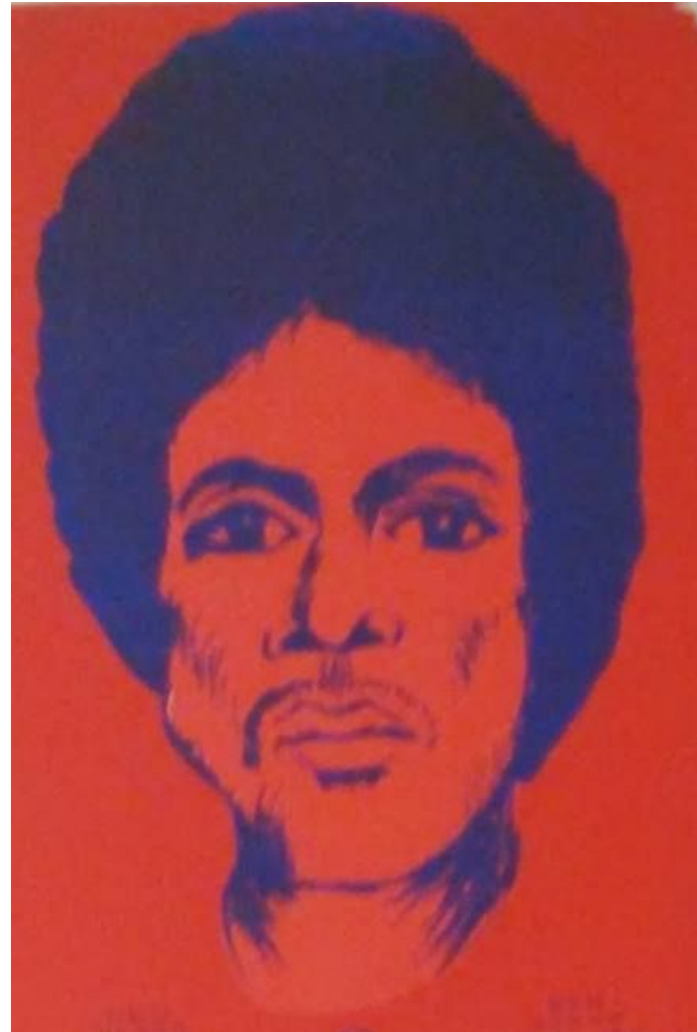
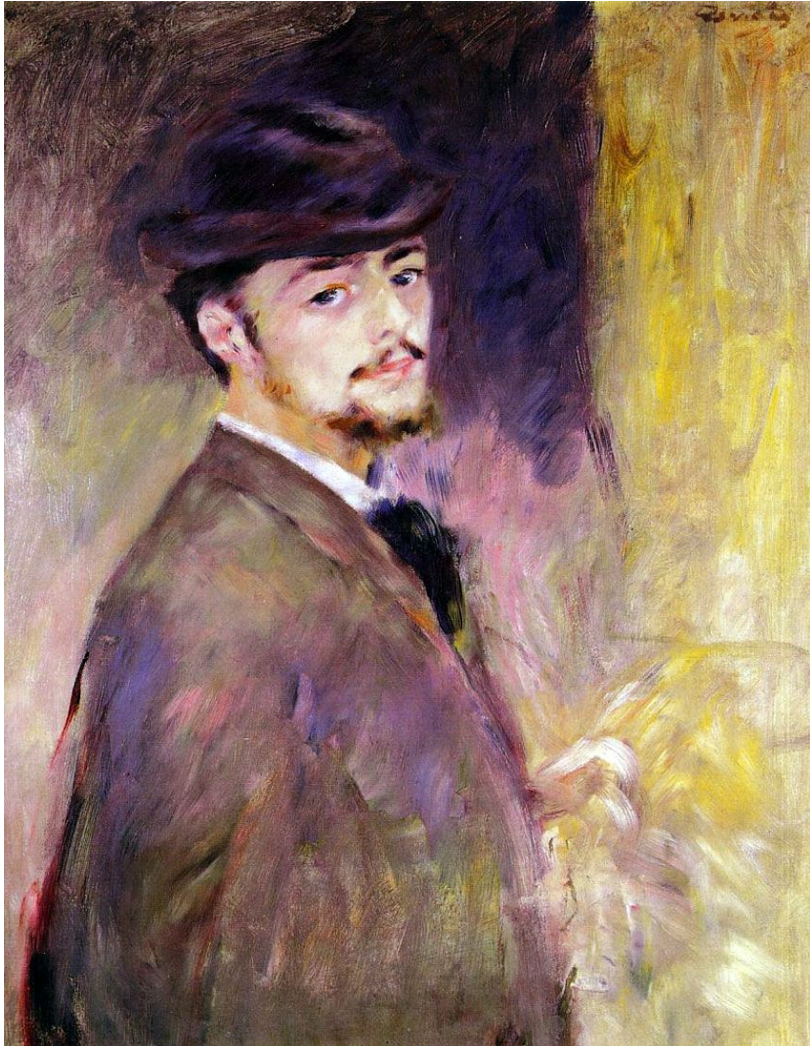
Reminders:

Symbolic Mandala Due 10/19

Wednesday Amazing Art - Week 2

10/19/16

In your sketchbook compare and contrast the two artworks!



Wednesday 10-19-16

Learning Goal #5 & 6: Students can create original drawings from observations, visual reference, and imagination. They can also demonstrate an understanding of color theory.

Daily Question: Can I demonstrate color theory in my design?

AGENDA: How I will learn it?

- Outline and add a color scheme to the Symbolic Mandala

WEEK 2

How do I know I learned it?

When I can score at least a 3 on the scale

4	I can correctly complete this activity innovatively.
3	I can correctly complete this activity independently
2	I can correctly complete this activity using peers assistance
1	I can correctly complete this activity using teacher assistance

5. How can I use it?

You can use the organization in other classes.

Reminders:

Symbolic Mandala Due 10/19

Thursday Amazing Art - Week 2

10/20/16

Using the same paper in your sketchbook sketch this artwork!



Title: Self-Portrait

Artist: Pierre-Auguste Renoir

Thursday 10-20-16

Learning Goal #5 & 6: Students can create original drawings from observations, visual reference, and imagination. They can also demonstrate an understanding of color theory.

Daily Question: Can I demonstrate color theory in my design?

AGENDA: How I will learn it?

- **Outline and add a color scheme to the Symbolic Mandala**

WEEK 2

How do I know I learned it?

When I can score at least a 3 on the scale

4	I can correctly complete this activity innovatively.
3	I can correctly complete this activity independently
2	I can correctly complete this activity using peers assistance
1	I can correctly complete this activity using teacher assistance

5. How can I use it?

You can use the organization in other classes.

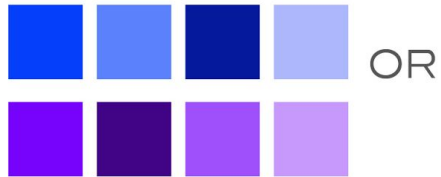
Reminders:

Symbolic Mandala Due 10/19

COLOR SCHEMES & EXAMPLES

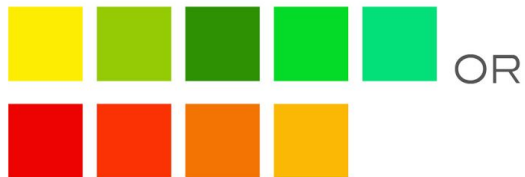
MONOCHROMATIC

BASED ON ONE COLOR



ANALOGOUS

3 TO 6 COLORS DIRECTLY NEXT TO EACH OTHER ON THE COLOR WHEEL



DIRECT COMPLEMENTARY
COLORS EXACTLY OPPOSITE ONE ANOTHER ON THE COLOR WHEEL.



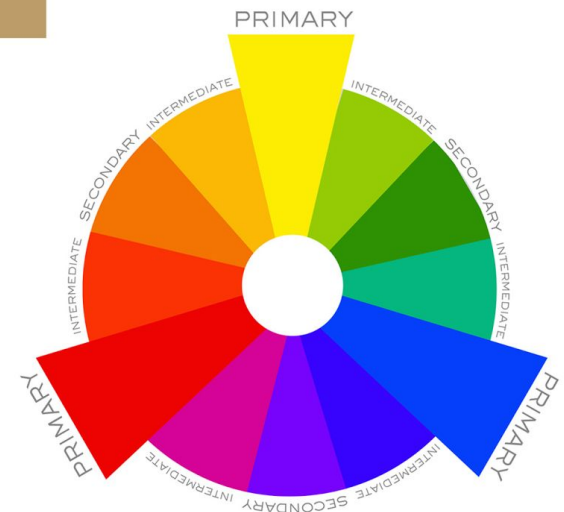
SPLIT COMPLEMENTARY

ONE COLOR AND THE TWO COLORS NEXT TO ITS DIRECT COMPLIMENT.



ACHROMATIC

RELYING ON BLACKS, WHITES, AND NEUTRALS. THESE COLORS DO NOT APPEAR ON THE COLOR WHEEL.



During this Activity I should

See:

C ONVERSATION	0	1	2	3
H ELP	RAISE YOUR HAND	ASK YOUR NEIGHBOR	ASK YOUR TEAMATES	ASK NEW STUDENT
A CTIVITIES	PRESENTATION & INSTRUCTION	INDEPENDENT WORK	PARTNER WORK	GROUP WORK
M OVEMENT	NONE	Move to Materials Counter	Move to Materials Counter	Move Around The Tables
P ARTICIPATION	RAISE YOUR HANDS	DRAWING, WRITING & READING	SPEAKING	DISCUSSING

5. Clean-Up

What You Will Do: (5 MINS)

Conversation At a Level-0.

Help You can raise your hand to receive help on the...

Activities Clean-Up Time

ARTISTS DUTIES	
1	ART ADVISOR
2	MATERIALS MANAGER
3	SKETCHBOOK SUPERVISOR
4	WASTE WATCHDOG

Movement Moving around the tables

Participation Cleaning

Class Reflection

Did you follow CHAMP during...

Class Rubric	“-” Needs Improvement	“+” Excellent
1. Entry & BW		
2. Instruction		
3. Activity		
4. Weekly Reflection		
5. Clean-up		

E=All +'s, S=3 or 4 +'s, N=0-2+'s

Does the class deserve an E, S, or N?