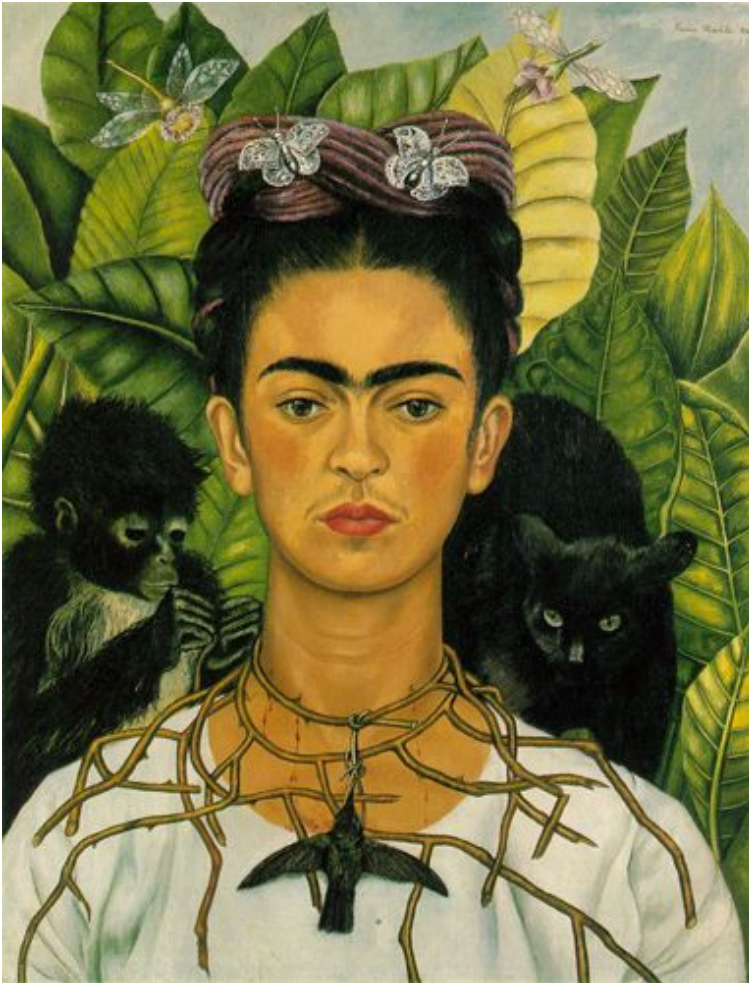


Using a new Page in your sketchbook Let's Describe this work of art!

Describe the COLORS, LINES, SHAPES, SPACES AND TEXTURE you see.



Frida Kahlo put so many symbolic creatures in this painting. She was not painting a realistic scene but using these symbolic elements to express her feelings. A bird is often symbolize freedom and life. Especially hummingbird which is colorful and always hovering above flowers. But in this painting the humming bird is black and lifeless. This might be a symbol of Frida herself. Frida spent most of her life in physical pain after the bus accident happened when she was eighteen. After that she endured about thirty-five operations to fix her body. She spent so many years bedridden and cannot bear any children. This is a painting about her suffering.

Title: Self-Portrait with Thorn Necklace and Hummingbird

Artist: Frida Kahlo

Monday 12-12-16

Learning Goal #5 : Students can create original drawings from observations, visual reference, and imagination.

Tech Issues

AGENDA: How I will learn it?

- **Start drawing your portrait**

WEEK 9

How do I know I learned it?

When I can score at least a 3 on the scale

4	I can correctly complete this activity innovatively.
3	I can correctly complete this activity independently
2	I can correctly complete this activity using peers assistance
1	I can correctly complete this activity using teacher assistance

5. How can I use it?

You can use this in your Portrait Drawing

Reminders:

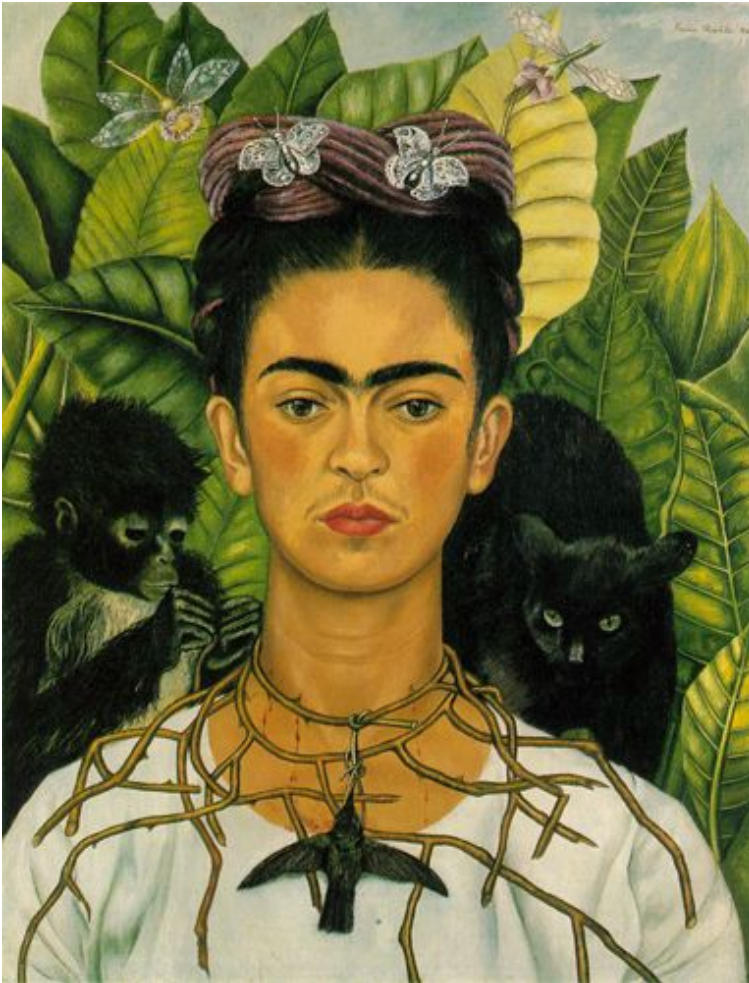
10pts - Have your parent(s)/guardians go to katundra.com and complete the parent form and you the student form.

Tuesday Amazing Art - Week 9

12/13/16

Using the paper in your sketchbook let's Analyze this work of art!

How did the artist organize this work of art using the Principles of Design? Choose 3 to explain.



Frida Kahlo put so many symbolic creatures in this painting. She was not painting a realistic scene but using these symbolic elements to express her feelings. A bird is often symbolize freedom and life. Especially hummingbird which is colorful and always hovering above flowers. But in this painting the humming bird is black and lifeless. This might be a symbol of Frida herself. Frida spent most of her life in physical pain after the bus accident happened when she was eighteen. After that she endured about thirty-five operations to fix her body. She spent so many years bedridden and cannot bear any children. This is a painting about her suffering.

Title: Self-Portrait with Thorn Necklace and Hummingbird

Artist: Frida Kahlo

Tuesday 12-13-16

Learning Goal #5 : Students can create original drawings from observations, visual reference, and imagination.

Daily Question: How can I accurately draw the shape?

AGENDA: How I will learn it?

- Continue drawing your portrait

WEEK 9

How do I know I learned it?

When I can score at least a 3 on the scale

4	I can correctly complete this activity innovatively.
3	I can correctly complete this activity independently
2	I can correctly complete this activity using peers assistance
1	I can correctly complete this activity using teacher assistance

5. How can I use it?

You can use this in your Portrait Drawing

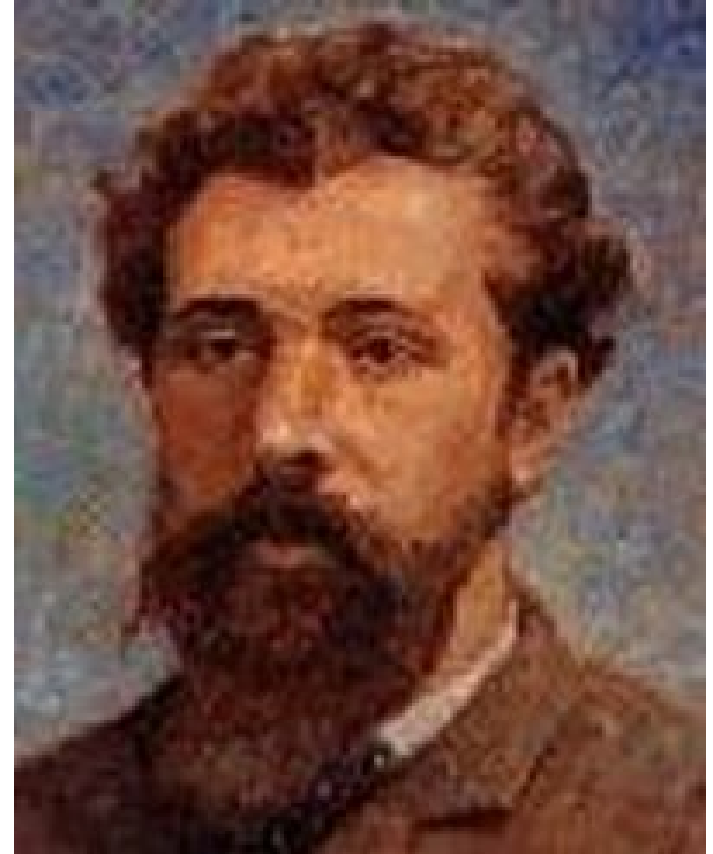
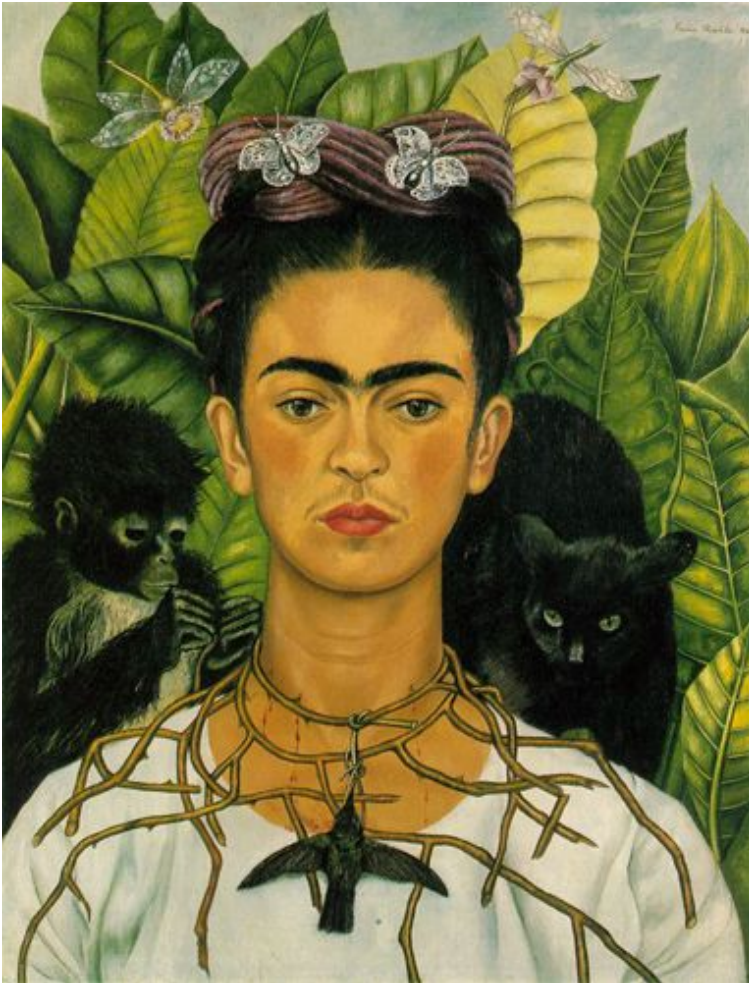
Reminders:

Next Assessment for Wks 7-9 Monday 12/19/16 .

Wednesday Amazing Art - Week 9

12/14/16

Using the paper in your sketchbook let's Compare and Contrast the 2 works of art! Tell me 3 things for each three categories.



Title: Self-Portrait

Artist: Georges Seurat

Title: Self-Portrait with Thorn Necklace and Hummingbird

Artist: Frida Kahlo

Wednesday 12-14-16

Learning Goal #5 : Students can create original drawings from observations, visual reference, and imagination.

Daily Question: How can I accurately draw the shape?

AGENDA: How I will learn it?

- Continue drawing your portrait

WEEK 9

How do I know I learned it?

When I can score at least a 3 on the scale

4	I can correctly complete this activity innovatively.
3	I can correctly complete this activity independently
2	I can correctly complete this activity using peers assistance
1	I can correctly complete this activity using teacher assistance

5. How can I use it?

You can use this in your Portrait Drawing

Reminders:

Next Assessment for Wks 7-9 Monday 12/19/16 .

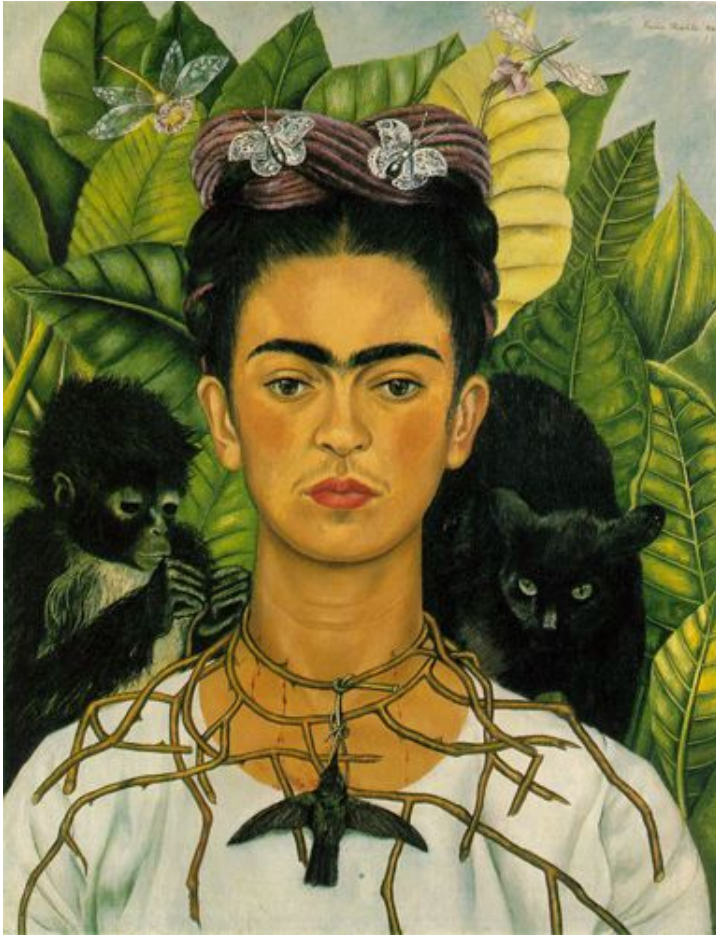
Thursday Amazing Art - Week 9

12/15/16

Using the paper in your sketchbook let's draw the work of art!

Start sketching the large shape and then focus on the smaller parts.

Write the artist name and art title.



Title: Self-Portrait with Thorn Necklace and Hummingbird

Artist: Frida Kahlo

Thursday 12-15-16

Learning Goal #5 : Students can create original drawings from observations, visual reference, and imagination.

Daily Question: How can I accurately draw the shape?

AGENDA: How I will learn it?

- Continue drawing your portrait

WEEK 9

How do I know I learned it?

When I can score at least a 3 on the scale

4	I can correctly complete this activity innovatively.
3	I can correctly complete this activity independently
2	I can correctly complete this activity using peers assistance
1	I can correctly complete this activity using teacher assistance

5. How can I use it?

You can use this in your Portrait Drawing

Reminders:

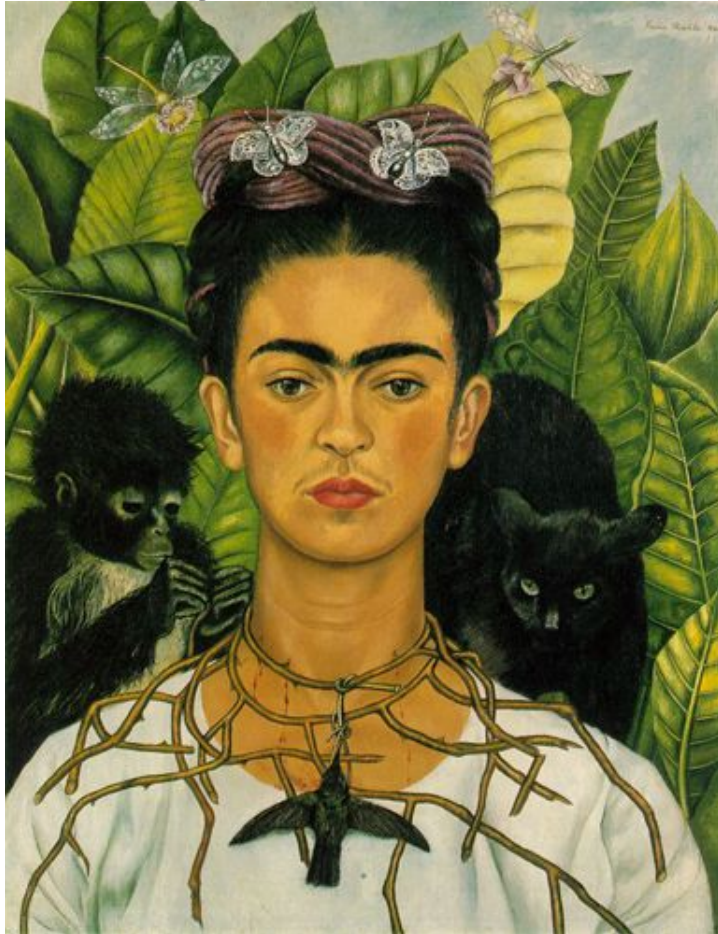
Next Assessment for Wks 7-9 Monday 12/19/16 .

Friday Amazing Art - Week 9

12/16/16

Using the same paper in your sketchbook judge this work of art.

What is the artist trying to say? Do you like this artwork? Why or Why not? Is the artwork successful. (3-4 sentences)



Title: Self-Portrait with Thorn Necklace and Hummingbird

Artist: Frida Kahlo

Friday 12-16-16

Learning Goal #5 : Students can create original drawings from observations, visual reference, and imagination.

Daily Question: How to trace my draft onto the final paper?

AGENDA: How I will learn it?

- Continue drawing your portrait
- Transfer portrait onto the final paper

WEEK 9

How do I know I learned it?

When I can score at least a 3 on the scale

4	I can correctly complete this activity innovatively.
3	I can correctly complete this activity independently
2	I can correctly complete this activity using peers assistance
1	I can correctly complete this activity using teacher assistance

5. How can I use it?

You can use this in your Portrait Drawing

Reminders:

Next Assessment for Wks 7-9 Monday 12/19/16 .

What You Will Do:

Conversation

At a Level-2.

Help

Ask your table members

Activities

Shade or Draw Shelly

1. Shade a Sphere
 2. Draw Shelly
 3. Work on Easy Bar Graph
 4. Free Draw
- or

4. Using the Exploring Art Book Read pgs. 1-5 and Complete the Check Your Understanding Section on pgs. 3 and 5. Write the question and provide an answer.

Movement

Materials Counter

Participation

Drawing

During this Activity I should

See:

C ONVERSATION	0	1	2	3
H ELP	RAISE YOUR HAND	ASK YOUR NEIGHBOR	ASK YOUR TEAMATES	ASK NEW STUDENT
A CTIVITIES	PRESENTATION & INSTRUCTION	INDEPENDENT WORK	PARTNER WORK	GROUP WORK
M OVEMENT	NONE	Move to Materials Counter	Move to Materials Counter	Move Around The Tables
P ARTICIPATION	RAISE YOUR HANDS	DRAWING, WRITING & READING	SPEAKING	DISCUSSING

Class Reflection

Did you follow CHAMP during...

Class Rubric	“-” Needs Improvement	“+” Excellent
1. Entry & BW		
2. Instruction		
3. Activity		
4. Weekly Reflection		
5. Clean-up		

E=All +'s, S=3 or 4 +'s, N=0-2+'s

Does the class deserve an E, S, or N?