

About the Bellwork

Biography

Working in oil and acrylic and at small- to mid-scale, Genieve Figgis produces paintings rich in color, texture, humor, and the macabre. Through her work, she explores and sends-up the idealization of luxury and leisure in paintings and photographs throughout art history. Like these historical works, her paintings feature sumptuous domestic interiors and stately country homes, idyllic natural settings, and protagonists dressed in finery and engaged in such activities as feasting, horseback riding, playing piano, or attending a party. Figgis's body of work also includes her take on the tradition of portraiture and the odalisque. In her compositions, however, all is not well. Her figures appear either faceless or as foolishly grinning, ghoul-like creatures, whose loosely rendered forms seem vulnerable and insubstantial as they merge with their lushly painted, semi-abstract surroundings.

What You Will Do: (5 MINS)

Conversation	At a Level-0 .
Help	You can raise your hand to receive help on the...
Activities	Bellwork

Monday BELLWORK - Week 8 q2

12/4/17

Using a new Page in your sketchbook Let's Describe this work of art!

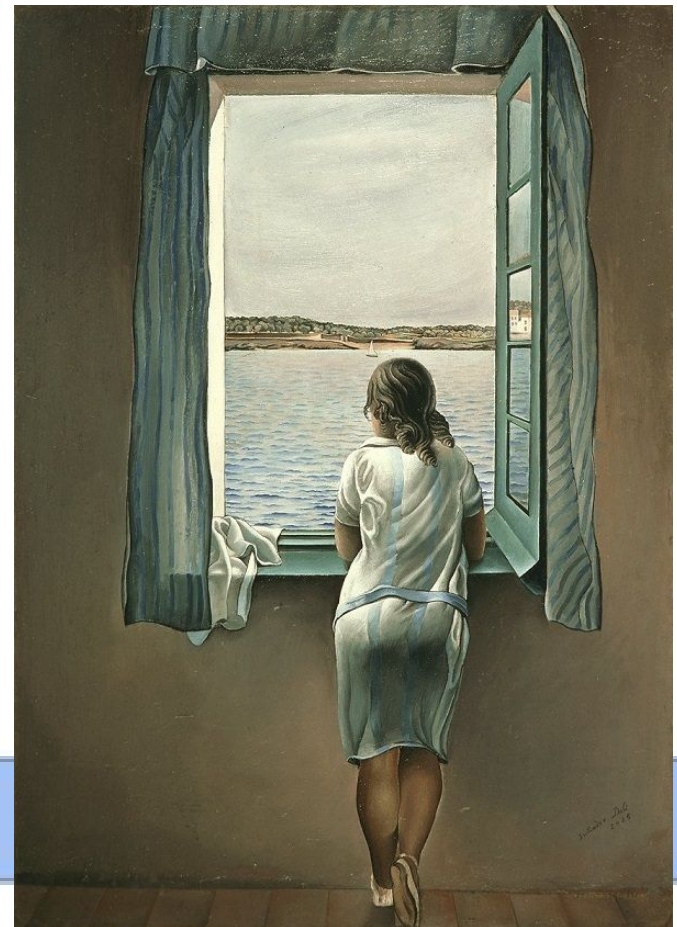
Describe What you see! the COLORS, LINES, SHAPES, SPACES, and TEXTURE you see.

Title: Figure at A Window

Artist: Salvador Dali

Year Made: 1925

Movement	None
Participation	Writing



(Write what's in Red!)

W.A.P. S. Week 8 q2

Monday 12-4-17

Unit: Drawing

Project: Personalized Figure Drawing

Due: Wednesday 12-13-17

Essential Question : EQ: Why are compositions important?

What will I learn today: Create new meaning in artworks through shared language, expressive content, and ideation. VA.68.O.2.1

How I will learn it? (Agenda)

-You have 8 days to complete Personalize Figure Drawing (3/10)

How do I know I learned it?

If you can score at least a 3 on the scale for the following:

Theme: Your Choice

Student **fills** the space and shows **good** evidence of the theme.

Technique: Figure Drawing

Student **Fills** the space and shows **good** evidence of a technique.

Elements and Principles of Design

Student shows **good** evidence of the Es and Ps in a good balanced design.

Followed Directions

Student followed directions of assignment creatively. Also, follows Art Room Rules.

Craftsmanship

Student's artwork appears thoughtfully planned; very neatly done; shows unity; **"Hanging Quality Work."**

4 A - Above Expectations

3 B - Met Expectations

2 C - Approaching Expectations

1 D - Below Expectations

Reminders:

- Find your Make-up work at katundra.com

-Upload Bellwork Wk 7_q2

What You Will Do: (5 MINS)

Conversation	At a Level-0 .
Help	You can raise your hand to receive help on the...
Activities	Bellwork

Tuesday BELLWORK - Week 8 q2 12/5/17

Using the paper in your sketchbook let's Analyze this work of art!

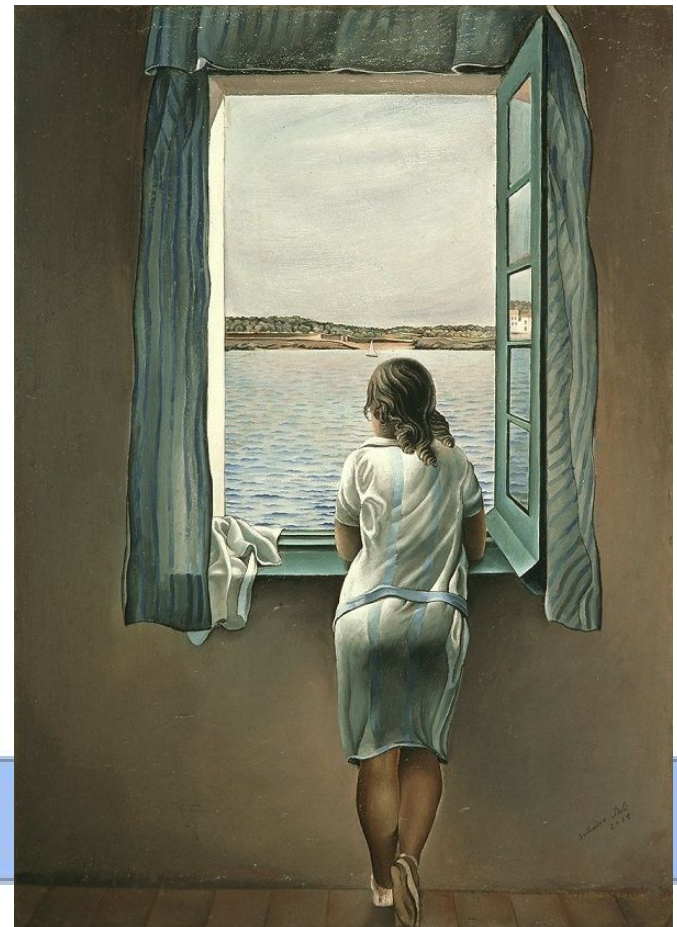
How did the artist organize this work of art using the Principles of Design? Choose 3 to explain.

Title: Figure at A Window

Artist: Salvador Dali

Year Made: 1925

Movement	None
Participation	Writing



(Write what's in Red!)

W.A.P. S. Week 8 q2

Tuesday 12-5-17

Unit: Drawing

Project: Personalized Figure Drawing

Due: Wednesday 12-13-17

Essential Question : **EQ:** How to effectively communicate your idea?

What will I learn today: Create new meaning in artworks through shared language, expressive content, and ideation. VA.68.O.2.1

How I will learn it? **(Agenda)**

-You have 7 days to complete Personalize Figure Drawing (4/10)

How do I know I learned it?

If you can score at least a 3 on the scale for the following:

Theme: Your Choice

Student **fills** the space and shows **good** evidence of the theme.

Technique: Figure Drawing

Student **Fills** the space and shows **good** evidence of a technique.

Elements and Principles of Design

Student shows **good** evidence of the Es and Ps in a good balanced design.

Followed Directions

Student followed directions of assignment creatively. Also, follows Art Room Rules.

Craftsmanship

Student's artwork appears thoughtfully planned; very neatly done; shows unity; **"Hanging Quality Work."**

4 A - Above Expectations

3 B - Met Expectations

2 C - Approaching Expectations

1 D - Below Expectations

Reminders:

- Find your Make-up work at katundra.com

-Upload Bellwork Wk 7_q2

BEN VENOM: WHAT'S YOUR STYLE?



- Aboriginal and Native Art ([Canadian lesson ideas](#))
- Advertising (idea: [the role of women](#), [Adbusters](#))
- Advocacy
- Animal Rights
- Architecture
- [Art + Politics](#)
- The Beauty Myth (idea: [the role of women](#), [Ralph Lauren](#) example)
- Bizarre and Surreal (1)
- Book Making ([Develop text and images](#), [Create book forms](#), [Explore artist books](#))
- Branding
- Casting Shadows (photography 1)
- Censorship ([The Art of Surveillance](#))
- Culture
- Compassion
- Conflict ([Capitalism vs Communism](#) posters, [Contemporary art & conflict](#))
- Consumption and Consumerism ([consumerism doco](#), [artful critiques of consumer culture](#), [Adbusters](#))
- Cooperation
- Creepy
- Desire
- Distortions
- Dreams
- Drip, Dribble or Splash
- Ecology
- Emotions (photography examples 1)
- Environment ([Environment lesson ideas](#), [Biotech & Environmental art](#))
- Eyes from Above/Below
- Fairy Tales
- Family Tree
- Family Structures
- Fantasy
- Fanzines
- Feel This

- Gadgets
- Gardens
- Graffiti ([tagging](#))
- Graphic Novels
- Great Outdoors
- Growing Up
- Glassy and Glossy
- Head in the Clouds
- Heroes
- Humour
- Identity ([race](#))
- Integrating Images
- International Origins
- Inside Out
- Journals
- Kinetic Sculpture
- Landscapes of the Mind
- Loneliness
- Loss
- Macabre ([examples](#))
- Manhood ([Wrestling With Manhood: Boys, Bullying & Battering](#))
- Medicine and/or Anatomy
- Memory
- Messy & Sloppy ([examples](#))
- Minimalism
- Mirrors
- Money ([Funny Money](#))
- Monsters
- Monuments (or [public art](#))
- Movie Posters (1, [Movie Posters for Minimalists](#))
- Music ([Drawing to Music](#))
- New Landscapes
- No Logo (as in the Naomi Klein book)
- Nostalgia
- Opposites Attract

- Paradise
- Paradox
- Pattern
- People Power
- Personality Through Sculpture
- Performance
- Perspectives
- Picture books ([info](#))
- Play
- Politics ([50 Stunning Political Artworks](#))
- Power
- Protest
- Public and Private Spaces ([Art in public places](#))
- Race ([info](#))
- Recycling
- Reflections ([water](#), metal, mirror, [glass](#), photography examples 1)
- [Rock Posters](#)
- Romance
- Seasons ([Spring photography examples](#))
- Seeing Things in a New Light
- Shattered Images
- Signage ([Basquiat ex.](#))
- Structures
- Stories
- Spirituality
- Superheroes
- Surrealist Rooms ([unit idea](#))
- Symbolism
- Systems
- Tactile Landscapes
- Through a Window
- Time and Space
- Torture ([article](#))
- Transformation

What You Will Do: (5 MINS)

Conversation	At a Level-0 .
Help	You can raise your hand to receive help on the...
Activities	Bellwork

Wednesday BELLWORK - Week 8 q2

12/6/17

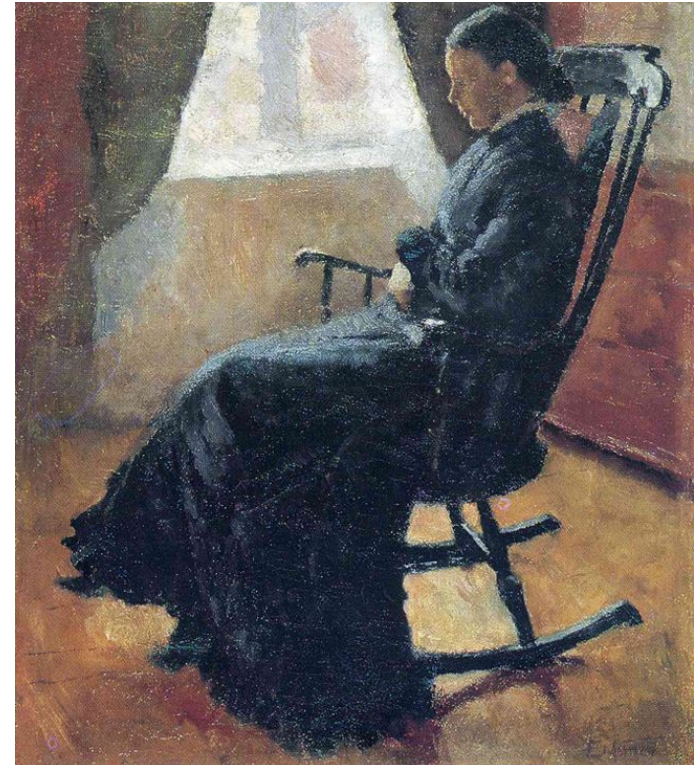
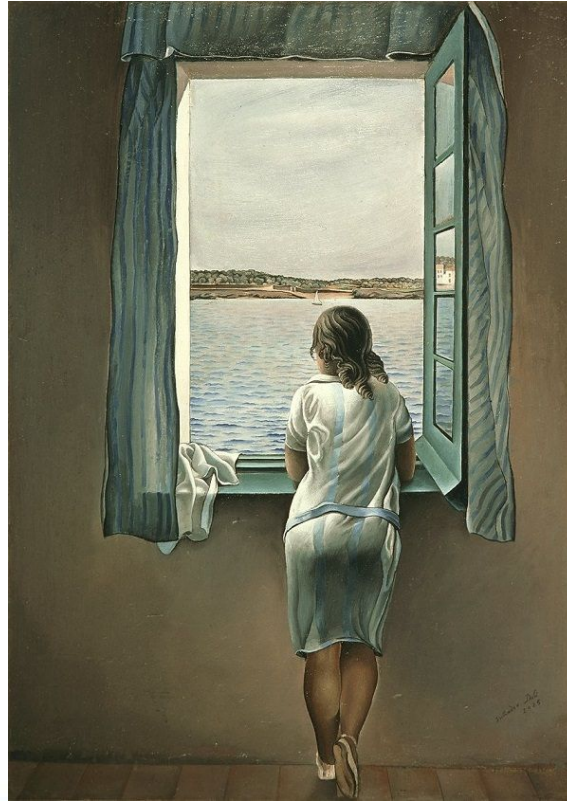
Compare and Contrast the 2 works of art!

Tell me 3 descriptions for each 3 categories.

Title: Figure at A Window

Artist: Salvador Dali

Year Made: 1925



Movement	None	<u>Title:</u> Aunt Karen in the Rocking Chair
Participation	Writing	<u>Artist:</u> Edvard Munch
		<u>Year Made:</u> 1883

(Write what's in Red!)

W.A.P. S. Week 8 q2

Wednesday 12-6-17

Unit: Drawing

Project: Personalized Figure Drawing

Due: Wednesday 12-13-17

Essential Question : **EQ:** How to effectively communicate your idea?

What will I learn today: Create new meaning in artworks through shared language, expressive content, and ideation. VA.68.O.2.1

How I will learn it? **(Agenda)**

-You have 6 days to complete Personalize Figure Drawing (5/10)

How do I know I learned it?

If you can score at least a 3 on the scale for the following:

Theme: Your Choice

Student **fills** the space and shows **good** evidence of the theme.

Technique: Figure Drawing

Student **Fills** the space and shows **good** evidence of a technique.

Elements and Principles of Design

Student shows **good** evidence of the Es and Ps in a good balanced design.

Followed Directions

Student followed directions of assignment creatively. Also, follows Art Room Rules.

Craftsmanship

Student's artwork appears thoughtfully planned; very neatly done; shows unity; **"Hanging Quality Work."**

4 A - Above Expectations

3 B - Met Expectations

2 C - Approaching Expectations

1 D - Below Expectations

Reminders:

- Find your Make-up work at katundra.com

-Upload Bellwork Wk 7_q2

What You Will Do: (5 MINS)

Conversation	At a Level-0 .
Help	You can raise your hand to receive help on the...
Activities	Bellwork

Thursday BELLWORK - Week 8 q2 - 12/7/17

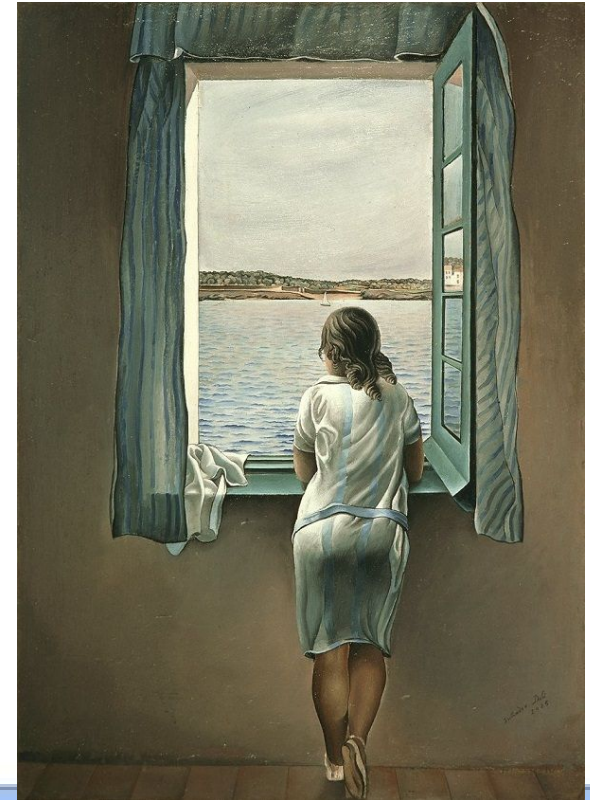
Using the paper in your sketchbook let's draw the work of art!

Start sketching the large shape and then focus on the smaller parts.

Title: Figure at A Window

Artist: Salvador Dali

Year Made: 1925



Movement	None
Participation	Writing

(Write what's in Red!)

W.A.P. S. Week 8 q2

Thursday 12-7-17

Unit: Drawing

Project: Personalized Figure Drawing

Due: Wednesday 12-13-17

Essential Question : **EQ:** How to effectively communicate your idea?

What will I learn today: Create new meaning in artworks through shared language, expressive content, and ideation. VA.68.O.2.1

How I will learn it? **(Agenda)**

-You have 5 days to complete Personalize Figure Drawing (6/10)

How do I know I learned it?

If you can score at least a 3 on the scale for the following:

Theme: Your Choice

Student **fills** the space and shows **good** evidence of the theme.

Technique: Figure Drawing

Student **Fills** the space and shows **good** evidence of a technique.

Elements and Principles of Design

Student shows **good** evidence of the Es and Ps in a good balanced design.

Followed Directions

Student followed directions of assignment creatively. Also, follows Art Room Rules.

Craftsmanship

Student's artwork appears thoughtfully planned; very neatly done; shows unity; **"Hanging Quality Work."**

4 A - Above Expectations

3 B - Met Expectations

2 C - Approaching Expectations

1 D - Below Expectations

Reminders:

- Find your Make-up work at katundra.com

-Upload Bellwork Wk 7_q2

What You Will Do: (5 MINS)

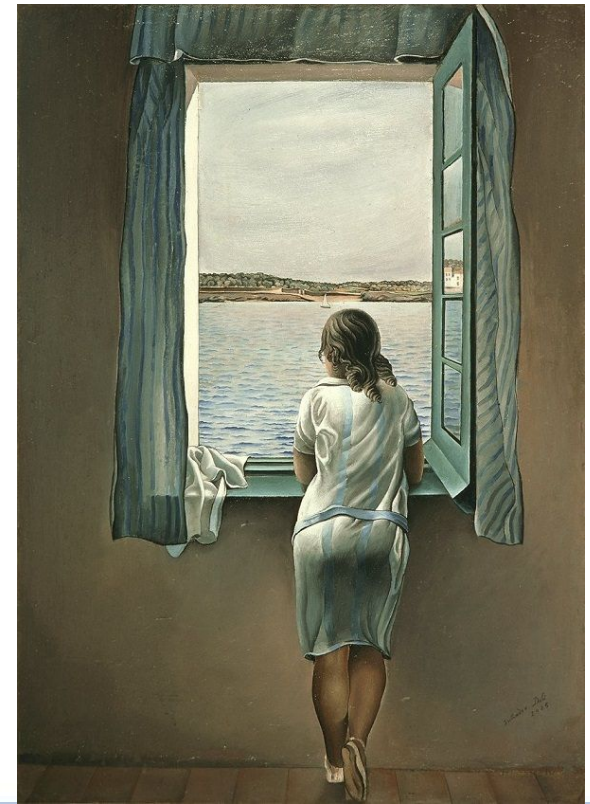
Conversation	At a Level-0.
Help	You can raise your hand to receive help on the...
Activities	Bellwork

Friday BELLWORK - Week 8 q2

12/8/17

Interpret and Judge this work of art.

What is the purpose or meaning of the artwork? What do you think about the artwork? Does the work communicate an idea, feeling, or principle that would have benefit for others? Explain. How would you rate it? (3-4 sentences)



Movement	None	<u>Title:</u> Figure at A Window
		<u>Artist:</u> Salvador Dali
Participation	Writing	<u>Year Made:</u> 1925

(Write what's in Red!)

W.A.P. S. Week 8 q2

Friday 12-7-17

Unit: Drawing

Project: Personalized Figure Drawing

Due: Wednesday 12-13-17

Essential Question : **EQ:** How to effectively communicate your idea?

What will I learn today: Create new meaning in artworks through shared language, expressive content, and ideation. VA.68.O.2.1

How I will learn it? **(Agenda)**

-You have 4 days to complete Personalize Figure Drawing (7/10)

How do I know I learned it?

If you can score at least a 3 on the scale for the following:

Theme: Your Choice

Student **fills** the space and shows **good** evidence of the theme.

Technique: Figure Drawing

Student **Fills** the space and shows **good** evidence of a technique.

Elements and Principles of Design

Student shows **good** evidence of the Es and Ps in a good balanced design.

Followed Directions

Student followed directions of assignment creatively. Also, follows Art Room Rules.

Craftsmanship

Student's artwork appears thoughtfully planned; very neatly done; shows unity; **"Hanging Quality Work."**

4 A - Above Expectations

3 B - Met Expectations

2 C - Approaching Expectations

1 D - Below Expectations

Reminders:

- Find your Make-up work at katundra.com

-Upload Bellwork Wk 7_q2

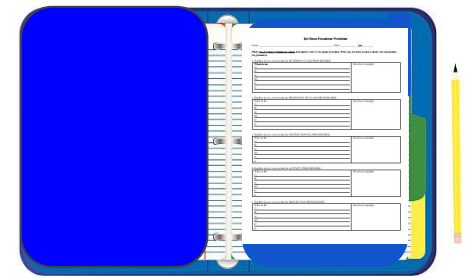
How to Set-Up Your Folder:

In the front - Art Room Procedures Worksheets

1st Divider - Write Weekly Art Participation Sheet

Place 10-Sheets of Notebook Paper behind this divider

This includes: W.A.P.S for the Nine weeks



2nd Divider - Write Project Notes

Place 4-Sheets of Notebook Paper behind this divider

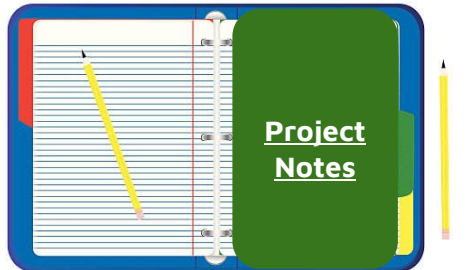
This includes: -Vocabulary Sheets & KWL NOTES



3rd Divider - Write Project Reflections

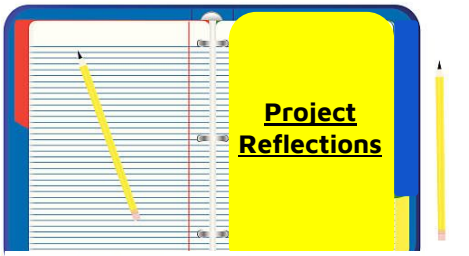
Place 4-Sheets of Notebook Paper behind this divider

This includes: -Artist Statement & Art Critique Comments



(4th Divider (only if you don't have a sketchbook) - Write Temporary Sketchbook)

This includes: -Bellwork, Sketches, Drawings



During this Activity I should Hear and See:

CONVERSATION	0	1	2	3
HELP	RAISE YOUR HAND	ASK YOUR NEIGHBOR	ASK 3 Peers BEFORE ME	ASK NEW STUDENT
ACTIVITIES	PRESENTATION & INSTRUCTION	INDEPENDENT WORK	PARTNER WORK	GROUP WORK
MOVEMENT	NONE	Move to Materials Counter	Move to Materials Counter & Computers	Move Around The Tables
PARTICIPATION	RAISE YOUR HANDS	DRAWING, WRITING & READING	SPEAKING	DISCUSSING
SOUND	No Music	Personal Music	Class Choice Music	Mrs. Stewart Music

What You Will Do: (5 MINS)- Reflection

Conversation	At a Level-0.
Help	You can raise your hand to receive help on the...
Activities	Reflection

1st
On your Weekly Art
Participation Sheet
Under the Reflection
Section
**Tell me what you did
in details using a
complete sentence**

2nd

Where do you stand with meeting the
standard for today:

1. Theme-Day of the Dead-Name to Honor 4 3 2 1
2. Technique- Zentangles 4 3 2 1
3. Elements/Principles 4 3 2 1
4. Following Directions 4 3 2 1
5. Craftsmanship 4 3 2 1

4 A - Above Expectations

3 B - Met Expectations

2 C - Approaching Expectations

1 D - Below Expectations

Movement	None
Participation	Writing

What You Will Do: (5 MINS)- Reflection

Conversation	At a Level-0.
Help	You can raise your hand to receive help on the...
Activities	Reflection

1st

On your *Weekly Art Participation Sheet*
Under the Reflection
Section

**Tell me what you
learned in details using
a complete sentence.**

2nd

Where do you stand with meeting the
standard for today:

1. Theme-Day of the Dead-Name to Honor 4 3 2 1
2. Technique- Zentangles 4 3 2 1
3. Elements/Principles 4 3 2 1
4. Following Directions 4 3 2 1
5. Craftsmanship 4 3 2 1

4 A - Above Expectations

3 B - Met Expectations

2 C - Approaching Expectations

1 D - Below Expectations

Movement	None
Participation	Writing

Clean-Up

What You Will Do: (3 MINS)

Conversation

At a Level-1.

Help

You can raise your hand to receive help on the...

Activities

Clean-Up Time

ARTISTS DUTIES	
4	ART ADVISOR
1	MATERIALS MANAGER
2	SKETCHBOOK SUPERVISOR
3	WASTE WATCHDOG

Movement

Moving around the tables

Participation

Cleaning

Class Reflection

Did you follow CHAMP during...

Class Rubric	“-” Needs Improvement	“+” Excellent
1. Entry & BW		
2. Instruction		
3. Activity		
4. Weekly Reflection		
5. Clean-up		

E=All +'s, S=3 or 4 +'s, N=0-2+'s

Does the class deserve an E, S, or N?