

Welcome Everyone to Mrs. StewART's Class!

We will get started soon.

Today is Navy Day

1st Period- 7:06 - 8:36

3rd Period 8:43 - 10:13

5th Period part 10:20 - 11:23

C Lunch 11:23 - 11:48

5th Period part 2 11:55 - 12:23

7th Period 12:30 - 2:00



New Cell Phone and Backpack Policy



1. When you come into the classroom place your cell phone in your backpack.
2. Place your backpack in the back storage room where it says your table number. **DO THIS BEFORE THE TARDY BELL!!!!**
3. You will be allowed to get your phone during *Independent Time* which is when you'll upload your bellwork.

*If your phone is out before the appropriate time then you will need to place it in my file cabinet and you'll be able to retrieve it at the end of class.

Why:

My goal as your instructor is to make sure I'm giving you the best instruction and that you are receiving that instruction in the most effective way.

What You Will Do: (5 MINS)

Conversation	Level-0
Help	Raise Your Hand
Activities	Bellwork

Directions:

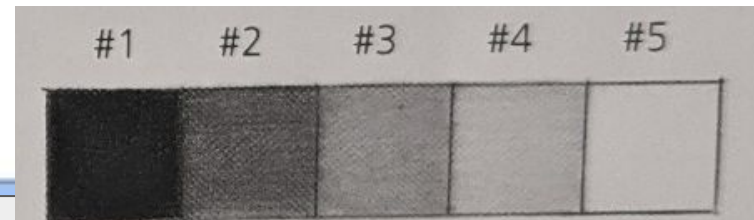
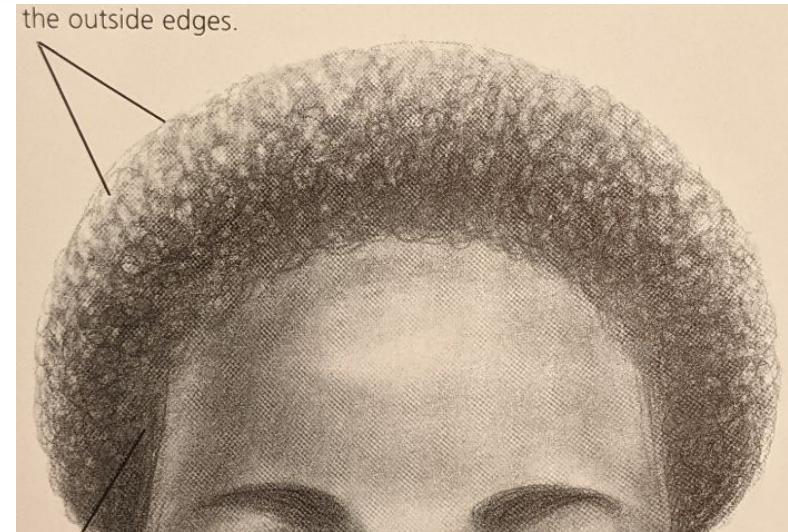
Use the next square to **DRAW** and **SHADE** this image. (Remember to use the 5 tone value scale)

You have 10 minutes

Direcciones:

Usa el siguiente cuadrado para DIBUJAR y SOMBRAR esta nariz y boca. (Recuerde usar la escala de valor de 5 tonos)

Tienes 10 minutos



Movement	Materials Counter
Participation	Drawing-No Phone
Sound	Instructor's Music

W.A.P. S. Week 5 q4

How do I know I learned it?

If you have the following:

Rubric for the Hair Exercise:

- Labels and text = 20pts
- Visuals = 20pts
- Shaded 20pts

Rubric for the Hairstyle Exercise:

- 4 Visuals of different Hairstyles= 50pts
- Shaded = 50pts

Essential Question: **EQ:** How can you show the thickness of hair?

What will I learn:

The student will learn the concept of value in terms of art. The student will learn the importance of value in the development of drawings and paintings

How I will learn it? (Agenda)

- Complete the Hair Exercise (Due at the end of class)
- Start Hairstyles Exercise
- Submit the image for the project before the end of this week or you will have to draw the reference image I provide

Vocabulary:

Value - In terms of art, value is the darkness or lightness of a color.

Tints - Tints are lighter values of a color.

Shades - Shades are darker values of a color.

Light Source - Location from which light is emitted.

Chiaroscuro - A drawing and painting effect of applying contrasting values in order to create the illusion of light source.

How to draw realistic curly hair



Hair Exercise



Draw the hair as one large shape. Add some shading under the bangs. Hair creates shadows on the skin, so this will help keep the bright white of the paper from shining through.



Do this first.

Apply quick pencil marks going in the direction of the arrows. See how it goes *down* from the top where the part is, and *up* from the bottom of the bangs? Keep applying the pencil lines until it starts to fill in. You can kind of see the "band of light" starting to form where the pencil lines don't quite meet. Keep your lines smooth; don't ever scribble.



Blend everything out. Blend in the same direction that you applied the pencil strokes. Don't ever blend across!



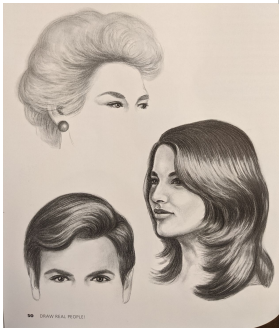
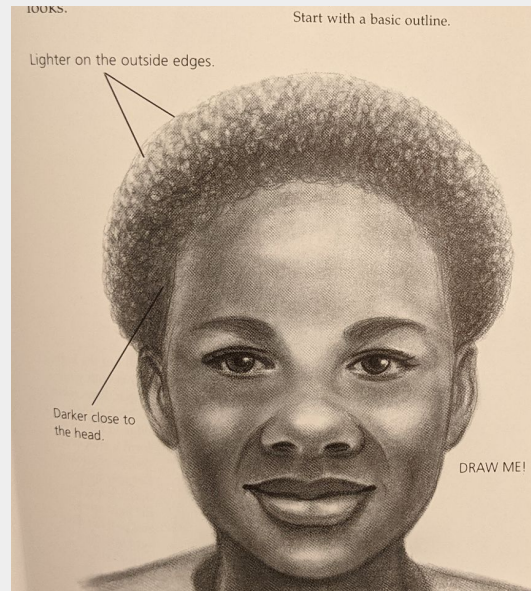
Darken the areas one more time. Use the same procedure as you did when you first applied your pencil lines.

Hairstyles Exercise

In the first 2 boxes draw the hairstyles that you see here; follow the directions in the book.

In the last 2 boxes Choose 2 Styles from the book or video that you want to draw.

*You don't have to draw the face



We've Now Entered Independent Time

- You Have 5 Mins To Upload Your Work To Artsonia
- You Have The Remainder Of The Period To Complete The
Items On The Agenda

You Have 5 mins to Upload Your Work to Artsonia

1. Either Download the Artsonia App on your phone or Use your Desktop Browser and type in Artsonia.com
2. Click on Student
3. Type in the Access Code **ZWSY-FKRS**
4. Click on All Students
5. Enter Your Name
6. Add Art
7. Select the name of the assignment:
Wk 5 4 28 q4 BW
8. Take a Picture
9. Crop the image if needed
10. Title the work
11. Type the Artist Statement:
12. Submit to Teacher

Submit Your Photo Reference

Directions:

- Submit the Photo Reference you want to use for the project to Artsonia under [Wk5_4_26_q4_PhotoReference for project](#).
- The image should be a bust which is from the shoulders up
- Answer the Artist Statement questions



grade: 12
uploaded: February 10, 2021
art status: completed
art title: —
statement: —
feedback: —
visibility: public



grade: 12
uploaded: February 10, 2021
art status: completed
art title: —
statement: —
feedback: —
visibility: private (waiting for parent)



grade: 11
uploaded: February 10, 2021
art status: completed
art title: —
statement: —
feedback: —
visibility: private (waiting for parent)



grade: 11
uploaded: February 8, 2021
art status: completed
art title: —
statement: —
feedback: —
visibility: public

Wk5 4 26 Hair Exercise

Direction:

Go to katundra.com follow the directions from the text we just read.

When you're done your paper should look like this.

Rubric:

- Labels and text = 20pts
- Visuals = 20pts
- Shaded = 20pts

Hair Exercise



Draw the hair as one large shape. Add some shading under the bangs. Hair creates shadows on the skin, so this will help keep the bright white of the paper from shining through.



Do this first.

Apply quick pencil marks going in the direction of the arrows. See how it goes *down* from the top where the part is, and *up* from the bottom of the bangs? Keep applying the pencil lines until it starts to fill in. You can kind of see the "band of light" starting to form where the pencil lines don't quite meet. Keep your lines smooth; don't ever scribble.



Blend everything out. Blend in the same direction that you applied the pencil strokes. Don't ever blend across!

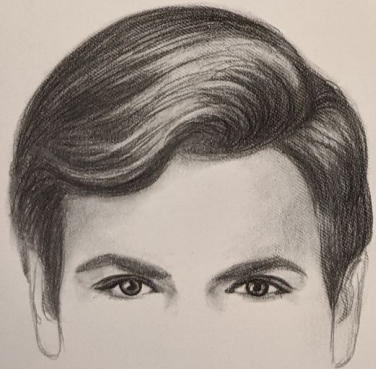


Darken the areas one more time. Use the same procedure as you did when you first applied your pencil lines.

MORE HAIRSTYLES

These examples will give you more practice with different styles and hair colors. Study each carefully. See where you can identify

the areas that have been drawn with a tortillon. Where is it drawn with the pencil? Where have I used the kneaded eraser?



50 DRAW REAL PEOPLE!

DRAWING CURLY HAIR

Curly hair can be fun to draw. Since all hair should be drawn in the direction of the hair's growth, curly hair is really just a bunch of little circular pencil marks. Try your hand at this short, fuzzy hairstyle. It's not as hard as it looks.

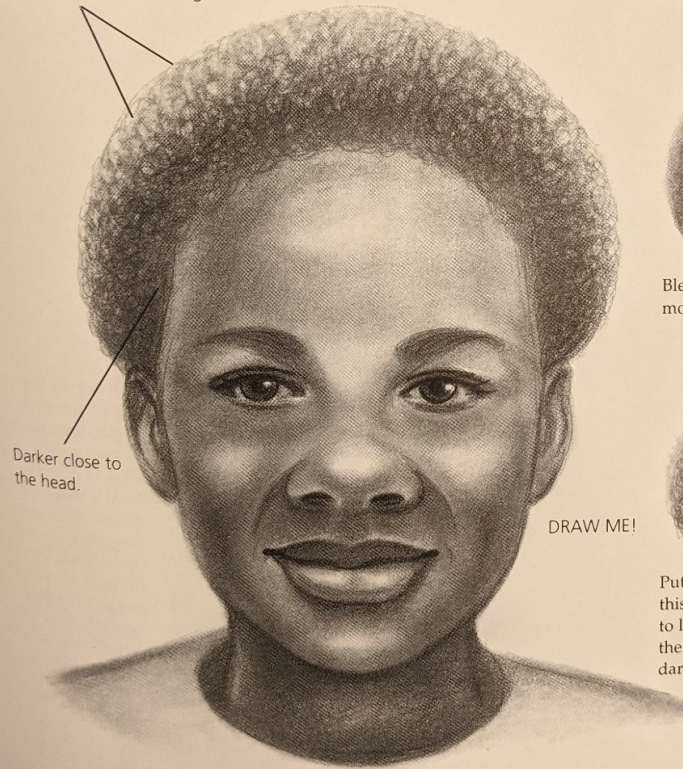


Start with a basic outline.



Fill in the shape with tight circular pencil lines until it fills in. Keep it lighter toward the outside edge.

Lighter on the outside edges.



Darker close to the head.



Blend it out using the same circular motion.



DRAW ME!

Put your kneaded eraser into a *point* this time and use a "dabbing" motion to lift out light areas. Keep the light on the outside edge and reapply some darkness to the area closer to the head.

Use circular, squiggly lines.



For fun, take a small graph and draw this person. For even more of a challenge, try to draw the other hairstyles, and taking the skills you now have for drawing people, finish their faces.

LONG, STRAIGHT HAIR

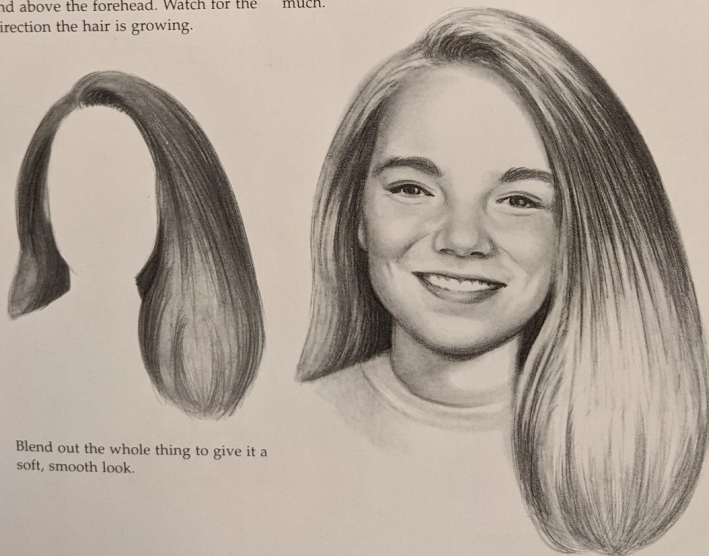
This exercise will give you some practice drawing long, straight hair. This is probably the easiest

hairstyle to draw; because of its long strokes, the hair direction is easy to establish.



Start with your basic outline and fill in the dark areas beside the neck. Start to fill in the dark strokes on the left side and above the forehead. Watch for the direction the hair is growing.

Continue to fill in the hair with very quick, long strokes. Pay attention to the light areas and don't fill them in too much.



Blend out the whole thing to give it a soft, smooth look.

Pull out the highlights with your eraser. Remember to keep a sharp edge to it, and reform it after every couple of strokes. Reapply more darks, going into the light areas, and pull out more light into the dark. Continue this back-and-forth procedure until you get the look you like.



The top view of this portrait gives you the opportunity to see the highlights of the hair in a different way. See how the "part" shows

up light next to the dark shadows? The band of light clearly shows where the hair is curving, since light always shows up on

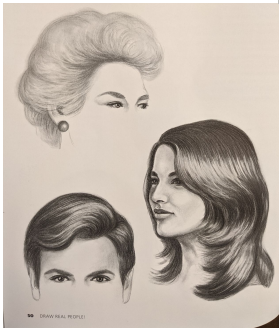
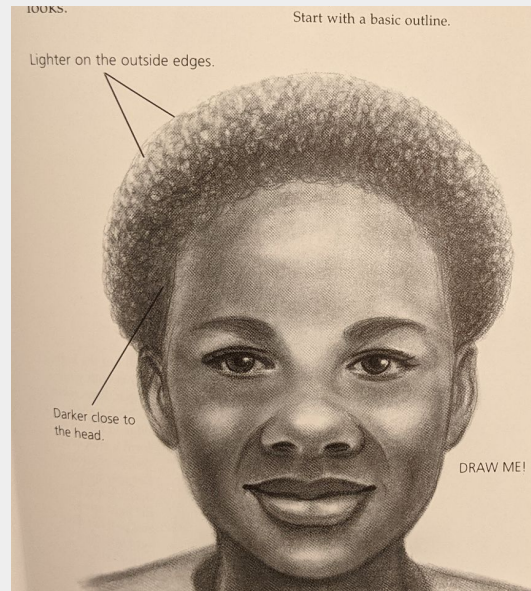
the places that protrude. The highlights that have been lifted give you the illusion of hair shine and hair direction.

Hairstyles Exercise

In the first 2 boxes draw the hairstyles that you see here; follow the directions in the book.

In the last 2 boxes Choose 2 Styles from the book or video that you want to draw.

*You don't have to draw the face



You Have 5 mins to Upload Your Work to Artsonia

1. Either Download the Artsonia App on your phone or Use your Desktop Browser and type in Artsonia.com
2. Click on Student
3. Type in the Access Code **ZWSY-FKRS**
4. Click on All Students
5. Enter Your Name
6. Add Art
7. Select the name of the assignment:
[Wk5_4_26_q4_Photo](#)graph for project
[Wk5 4 28 Hair Exercise Final](#)
8. Take a Picture
9. Crop the image if needed
10. Title the work
11. Type the Artist Statement:
12. Submit to Teacher