

What You Will Do: (5 MINS)

Conversation	At a Level-0 .
Help	You can raise your hand to receive help on the...
Activities	Bellwork

Monday BELLWORK - Week 5 q2

11/13/17

Using a new Page in your sketchbook Let's Describe this work of art!

Describe What you see! the COLORS, LINES, SHAPES, SPACES, and TEXTURE you see.

Title: Emma

Artist: Chuck Close

Year Made: 2002

Movement	None
Participation	Writing



(Write what's in Red!)

W.A.P. S. Week 5 q2

Monday 11-13-17

Unit: Proportion

Lesson: Veteran's Portrait

Due Date: Tuesday 11-14-17

Essential Question : EQ: How can a grid be used to draw and paint accurately?

What will I learn today: Organize the structural elements of art to achieve artistic goals when producing personal works of art.VA.68.S.2.1

How I will learn it? (Agenda)

-Grade Folders Wks 1-4

10. Draw your veterans portrait, you have 2 days to complete your portrait
(Day 11/12)

How do I know I learned it?

If you can show me the following at an independent level:

1. Theme-Veterans Day
2. Technique- Grid Technique
3. Elements/Principles
4. Following Directions
5. Craftsmanship

- 4 A - Above Expectations
- 3 B - Met Expectations
- 2 C - Approaching Expectations
- 1 D - Below Expectations

**How can I use it?
in future projects.**

Reminders:

If you're out go to Katundra.com for makeup work

-Upload the following

-Bellwork wk 3_q2 by Thursday

What You Will Do: (5 MINS)

Conversation	At a Level-0 .
Help	You can raise your hand to receive help on the...
Activities	Bellwork

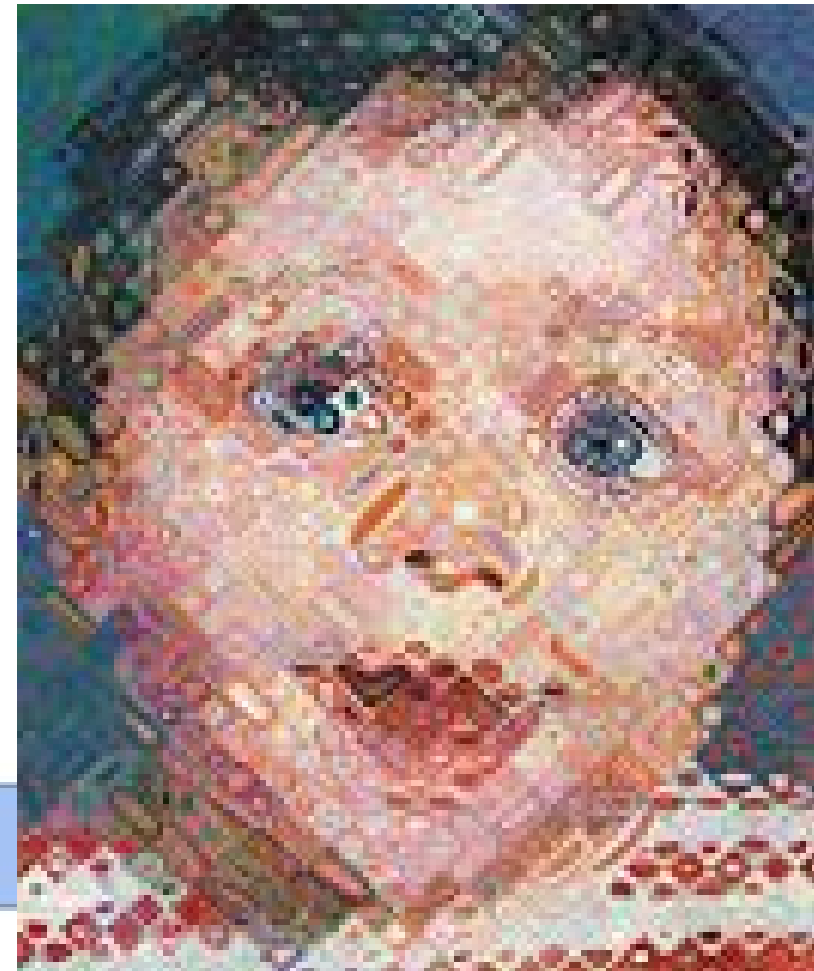
Tuesday BELLWORK - Week 5 q2 11/14/17

Using the paper in your sketchbook
let's Analyze this work of art!

Choose 3 Principles of Design and
provide an explanation for each one
using the artwork.

Title: Emma
Artist: Chuck Close
Year Made: 2002

Movement	None
Participation	Writing



(Write what's in Red!)

W.A.P. S. Week 5 q2

Tuesday 11-13-17

Unit: Proportion

Lesson: Veteran's Portrait

Due Date: Tuesday 11-14-17

Essential Question : EQ: How can a grid be used to draw and paint accurately?

What will I learn today: Organize the structural elements of art to achieve artistic goals when producing personal works of art.VA.68.S.2.1

How I will learn it? (Agenda)

-Grade Folders Wks 1-4

10. Draw your veterans portrait, you have 2 days to complete your portrait
(Day 11/12)

How do I know I learned it?

If you can show me the following at an independent level:

1. Theme-Veterans Day
2. Technique- Grid Technique
3. Elements/Principles
4. Following Directions
5. Craftsmanship

- 4 A - Above Expectations
- 3 B - Met Expectations
- 2 C - Approaching Expectations
- 1 D - Below Expectations

**How can I use it?
in future projects.**

Reminders:

If you're out go to Katundra.com for makeup work

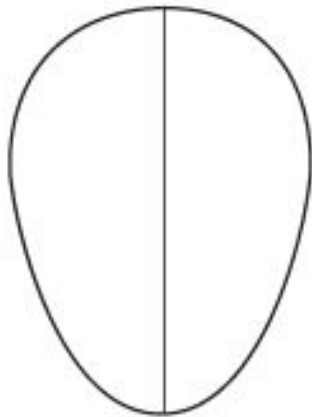
-Upload the following

-Bellwork wk 3_q2 by Thursday

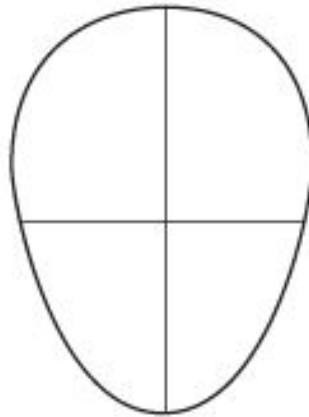
Proportions of the Face



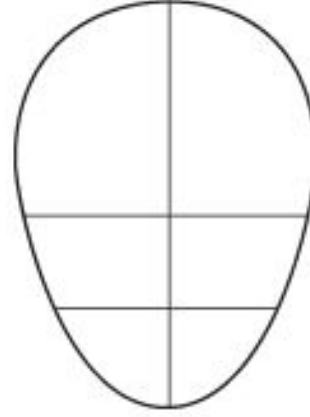
To begin drawing a portrait you will first need to draw an egg shape. Remember that the narrow part of the egg points down as this will become the chin.



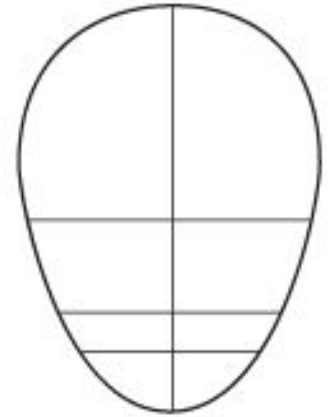
Draw a line vertically right through the centre of the egg. This line will make sure that you line up the nose, mouth and eyes correctly.



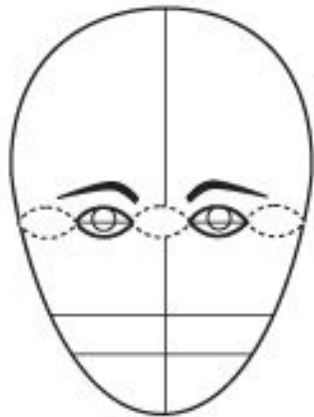
Draw a horizontal line half way down the egg. This is where the eyes and top of the ears will go.



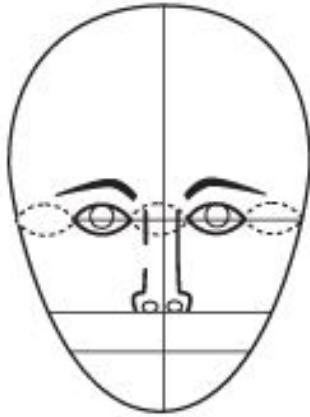
Half way between the eye line and the chin draw a second horizontal line. This is where the bottom of the nose and ears will go.



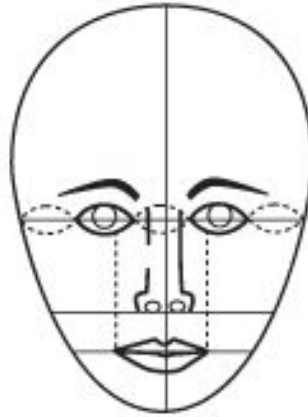
A third of the way down from the nose line draw a third horizontal line. This is where the mouth will go.



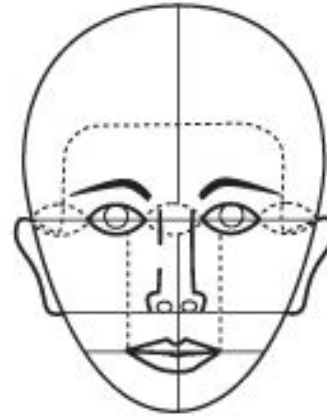
Draw in the eyes with the corners on the line. To ensure the eyes are the correct size you should be able to fit five equal eye widths across the head.



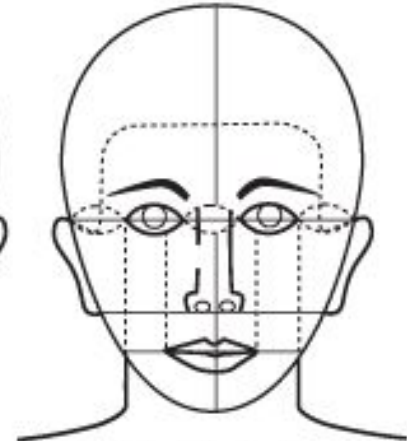
Draw the bottom of the nose. The nostrils should rest on the line.



Draw in the mouth with the line dividing the two lips. By measuring a third in from the inside corner of the eye and drawing a line vertically on each side, you can achieve an accurate mouth width.



Draw in the ears and the hairline. The hairline can help determine the shape of the face. Remember the ears should fit snugly between the eye and nose lines.



Draw the neck by drawing a vertical line from the outer corner of the eye on each side to achieve the correct width.

What You Will Do: (5 MINS)

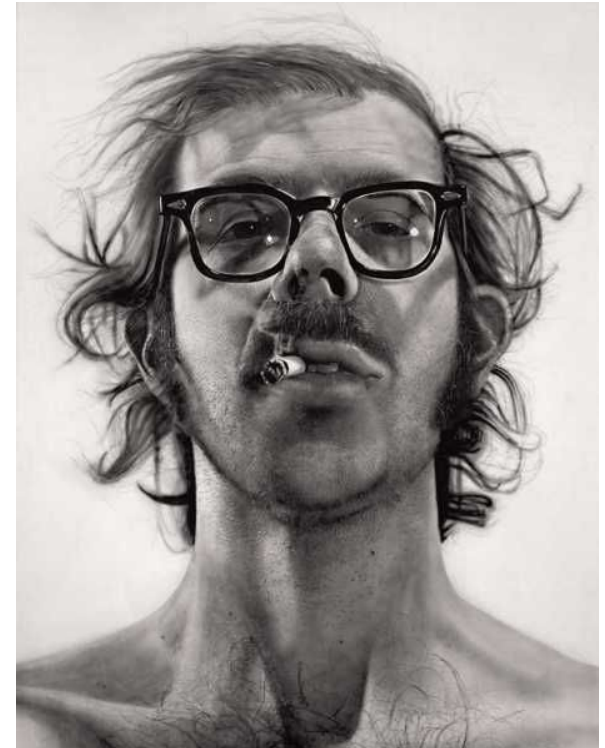
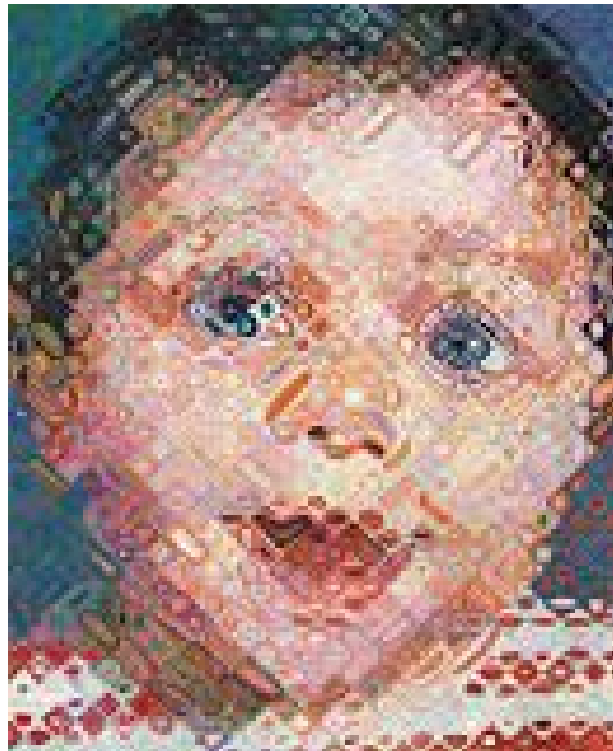
Conversation	At a Level-0 .
Help	You can raise your hand to receive help on the...
Activities	Bellwork

Wednesday BELLWORK - Week 5 q2

11/15/17

Compare and Contrast the 2 works of art!

Tell me 3 descriptions for each 3 categories.



Movement	None	<u>Title:</u> Emma <u>Artist:</u> Chuck Close	<u>Title:</u> Big Self-Portrait <u>Artist:</u> Chuck Close
Participation	Writing	<u>Year Made:</u> 2002	<u>Year Made:</u> 1967-68

(Write what's in Red!)

W.A.P. S. Week 5 q2

Wednesday 11-14-17

Unit: Proportion

Lesson: Veteran's Portrait

Due Date: Tuesday 11-14-17

Essential Question : **EQ: Why do artists reflect?**

What will I learn today: Organize the structural elements of art to achieve artistic goals when producing personal works of art.VA.68.S.2.1

How I will learn it? (Agenda)

-Upload your Drawing

-Answer Reflection Questions in your Art Folder

How do I know I learned it?

If you can show me the following at an independent level:

1. How does your portrait drawing represent the Veterans Day?
2. What technique was used to create your portrait?
3. What principle of design is exemplified in the artwork? Explain.
4. What was the inspiration for creating this piece of artwork?
5. what would you change if you were to create it again? Why

Reminders:

If you're out go to Katundra.com for makeup work

-Upload the following

-Bellwork wk 4_q2 by Thursday

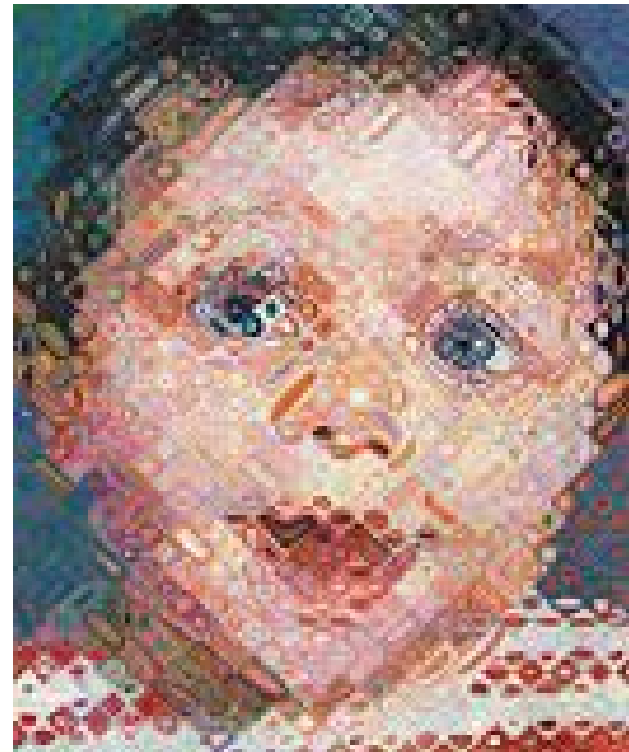
What You Will Do: (5 MINS)

Conversation	At a Level-0 .
Help	You can raise your hand to receive help on the...
Activities	Bellwork

Thursday BELLWORK - Week 5 q2 - 11/16/17

Using the paper in your sketchbook let's draw the work of art!

Start sketching the large shape and then focus on the smaller parts.



Movement	None	<u>Title:</u> Emma
		<u>Artist:</u> Chuck Close
Participation	Writing	<u>Year Made:</u> 2002

(Write what's in Red!)

W.A.P. S. Week 5 q2

Thursday 11-15-17

Unit: Proportion

Lesson: Veteran's Portrait

Due Date: Tuesday 11-14-17

Essential Question : **EQ: Why do artists reflect?**

What will I learn today: Organize the structural elements of art to achieve artistic goals when producing personal works of art.VA.68.S.2.1

How I will learn it? (Agenda)

-Answer Reflection Questions in your Art Folder

How do I know I learned it?

If you can show me the following at an independent level:

1. How does your portrait drawing represent the Veterans Day?
2. What technique was used to create your portrait?
3. What principle of design is exemplified in the artwork? Explain.
4. What was the inspiration for creating this piece of artwork?
5. what would you change if you were to create it again? Why

Reminders:

If you're out go to Katundra.com for makeup work

-Upload the following

-Bellwork wk 4_q2 by Thursday

What You Will Do: (5 MINS)

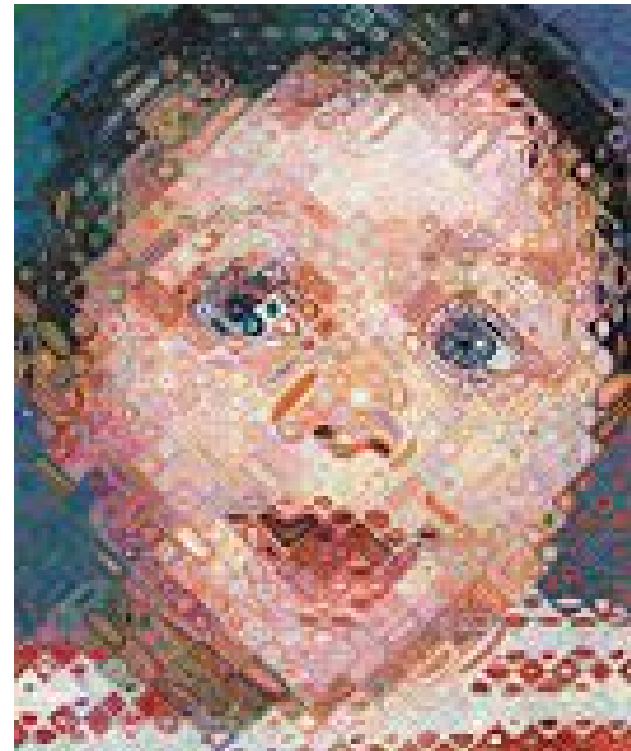
Conversation	At a Level-0.
Help	You can raise your hand to receive help on the...
Activities	Bellwork

Friday BELLWORK - Week 5 q2

11/17/17

Interpret and Judge this work of art.

What is the purpose or meaning of the artwork? What do you think about the artwork? Does the work communicate an idea, feeling, or principle that would have benefit for others? Explain. How would you rate it? (3-4 sentences)



Movement	None	<u>Title:</u> Emma
		<u>Artist:</u> Chuck Close
Participation	Writing	<u>Year Made:</u> 2002

(Write what's in Red!)

W.A.P. S. Week 5 q2

Friday 11-16-17

Unit: Proportion

Lesson: Veteran's Portrait

Due Date: Tuesday 11-14-17

Essential Question : **EQ: Why do artists reflect?**

What will I learn today: Organize the structural elements of art to achieve artistic goals when producing personal works of art.VA.68.S.2.1

How I will learn it? (Agenda)

-Answer Reflection Questions in your Art Folder

-Present

How do I know I learned it?

If you can show me the following at an independent level:

1. How does your portrait drawing represent the Veterans Day?
2. What technique was used to create your portrait?
3. What principle of design is exemplified in the artwork? Explain.
4. What was the inspiration for creating this piece of artwork?
5. what would you change if you were to create it again? Why

Reminders:

If you're out go to Katundra.com for makeup work

-Upload the following

-Bellwork wk 4_q2 by Thursday

During this Activity I should Hear and See:

C ONVERSATION	0	1	2	3
H ELP	RAISE YOUR HAND	ASK YOUR NEIGHBOR	ASK 3 Peers BEFORE ME	ASK NEW STUDENT
A CTIVITIES	PRESENTATION & INSTRUCTION	INDEPENDENT WORK	PARTNER WORK	GROUP WORK
M OVEMENT	NONE	Move to Materials Counter	Move to Materials Counter & Computers	Move Around The Tables
P ARTICIPATION	RAISE YOUR HANDS	DRAWING, WRITING & READING	SPEAKING	DISCUSSING
S OUND	No Music	Personal Music	Class Choice Music	Mrs. Stewart Music

Reflection

What You Will Do: (5 MINS)

Conversation	At a Level-0.
Help	You can raise your hand to receive help on the...
Activities	Reflection
<p>On your Weekly Art Participation Sheet</p> <p>Under the Reflection Section</p> <p>Tell me what you learned in details using a complete sentence.</p>	
Movement	None
Participation	Writing

Clean-Up

What You Will Do: (3 MINS)

Conversation At a Level-1.

Help You can raise your hand to receive help on the...

Activities Clean-Up Time

ARTISTS DUTIES	
1	ART ADVISOR
2	MATERIALS MANAGER
3	SKETCHBOOK SUPERVISOR
4	WASTE WATCHDOG

Movement Moving around the tables

Participation Cleaning

Class Reflection

Did you follow CHAMP during...

Class Rubric	“-” Needs Improvement	“+” Excellent
1. Entry & BW		
2. Instruction		
3. Activity		
4. Weekly Reflection		
5. Clean-up		

E=All +'s, S=3 or 4 +'s, N=0-2+'s

Does the class deserve an E, S, or N?